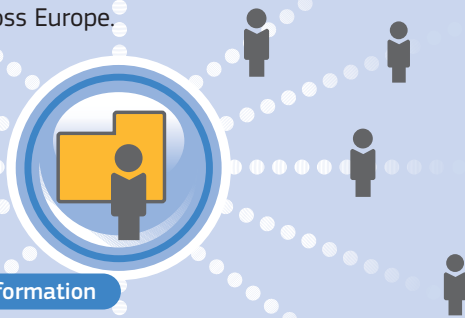


**Climate-ADAPT**<sup>1</sup>, an initiative of the European Commission, is a Web portal aiming to support Europe in adapting to climate change.

It has been developed with the support of the European scientific and policymaking community, and will help policymakers at EU, national, regional and local levels access a wide range of resources to develop practical adaptation measures and policies.

## Share your information and experiences

**Climate-ADAPT** provides an opportunity for researchers and practitioners to upload the latest research and practical experiences of adaptation across Europe.



Share your information

<sup>1</sup> Climate-ADAPT is a partnership between the European Commission (DG CLIMA, Joint Research Centre and other DGs) and the European Environment Agency.

<http://climate-adapt.eea.europa.eu>

*Climate-ADAPT users said:*

**"Climate-ADAPT** helped us to learn from other countries' policies in the development of our national adaptation strategy."

National policymaker (Italy)

**"Using Climate-ADAPT** we could find out how other cities have developed approaches to adapt to increases in urban drainage flooding events."

City planner (Copenhagen)

**"Climate-ADAPT** is a rich source of information for researchers. We also upload information on adaptation methods and tools to **Climate-ADAPT**."

Researcher (EU FP7 MEDIATION project)

**"This can be a tremendous tool helping decision makers to choose the best solutions to the benefit of their citizens... This new interactive tool will make efforts much more efficient."**

*Connie Hedegaard – Commissioner for Climate Action*

<http://climate-adapt.eea.europa.eu>

© European Union, 2013.

Reproduction is authorised provided the source is acknowledged.

Printed on revive Pure White Silk, a recycled paper produced using 100% recycled waste at a mill that has been awarded the ISO140001 certificate for environmental management.

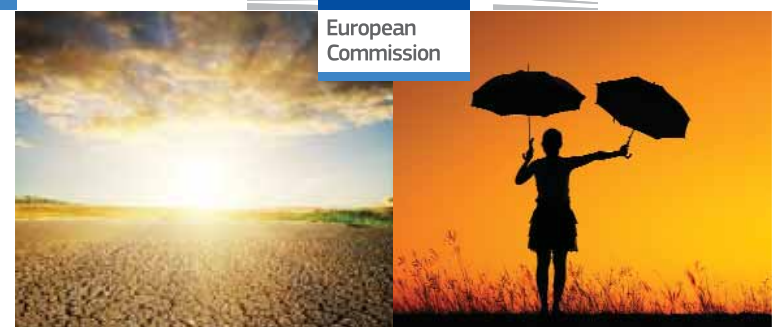
The pulp is bleached using a totally chlorine free (TCF) process.

doi: 10.2834/49551

ISBN 978-92-79-22838-4



Publications Office



## Supporting effective climate adaptation



# European Climate Adaptation Platform Climate-ADAPT

<http://climate-adapt.eea.europa.eu>

Climate  
Action



Climate-ADAPT

# European Climate Adaptation Platform

Navigate the menu bar to access the latest climate adaptation information and resources applicable to Europe

[Home](#) | [Adaptation information](#) | [EU sector policies](#) | [Countries and other areas](#) | [Tools](#) | [Links](#) | [Search the database](#)

## Develop your adaptation approach

The **Climate-ADAPT Adaptation Support Tool** provides guidance, links and tools based on the adaptation policy cycle, from assessing the risks to the choice of adaptation options and the monitoring of actions.

Refer to the **Uncertainty Guidance** to understand and get advice on how to deal with uncertainty, a major challenge in adaptation planning.



## Find up-to-date information

Use the **Climate-ADAPT** searchable **database** of over 1000 quality checked items to find publications and reports, information, maps, graphs and datasets, and indicators relevant to your adaptation needs.



Searchable database

## Know what is going on in Europe

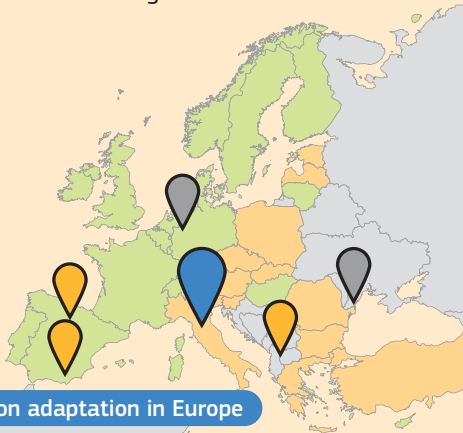
Get up to speed on what the EU is doing to adapt to climate change on **Climate-ADAPT**, including details on the EU Adaptation Strategy.

Discover how the EU is integrating climate adaptation action into its policies, and search on **Climate-ADAPT** for specific adaptation resources for various EU policy sectors.

If you need further assistance on adaptation, discover **links** to the organisations that carry out adaptation work.

## Learn from experiences across Europe

Searching the **Climate-ADAPT Find Case Studies Tool** shows you how other cities and regions are adapting to similar climate change vulnerabilities.



Find case studies on adaptation in Europe

# Climate-ADAPT

Helps you and your community to...

## Find news and events

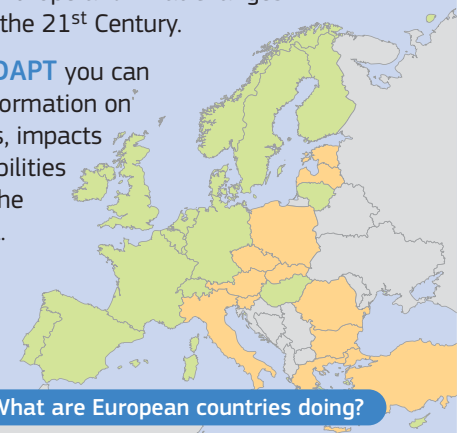
Use **Climate-ADAPT** to keep yourself up-to-date with the latest adaptation **news** and **events** across Europe and beyond.



## Understand your national and regional context

Access spatial information via the **Map Viewer** to analyse how climate change is already affecting your area of interest in Europe and what changes are expected over the 21<sup>st</sup> Century.

Using **Climate-ADAPT** you can find up-to-date information on adaptation policies, impacts as well as vulnerabilities from the local to the transnational level.



What are European countries doing?

<http://climate-adapt.eea.europa.eu>