

CCS and CCU in cement industry

Some projects

Rob van der Meer

6th April 2017



Overview

- **Relevancy**
 - WBCSD / International Energy Agency - Roadmap
- **Some CCU and CCS projects in cement industry**
- **Economic effects**

The Carbon Capture project in Brevik, Norway

Four technologies tested at the kiln stack between 2012 and 2015

Basic research project for Carbon Capture was carried out at cement plant Brevik operated by HeidelbergCement

Amine scrubber technology was identified as “most appropriate and reliable” to enhance CO₂ concentration from about 30% to > 98%

Funding mostly via subsidiary NORCEM and Norwegian government (Σ €9m)

The project in Brevik was the kick-off for intensive “Carbon Capture Research” in the cement industry



HEIDELBERGCEMENT



NORCEM
HEIDELBERGCEMENT Group


GASSNOVA

The ECRA Oxyfuel project utilizes CO₂ as process gas

Cooperation spear-headed by European Cement Research Academy

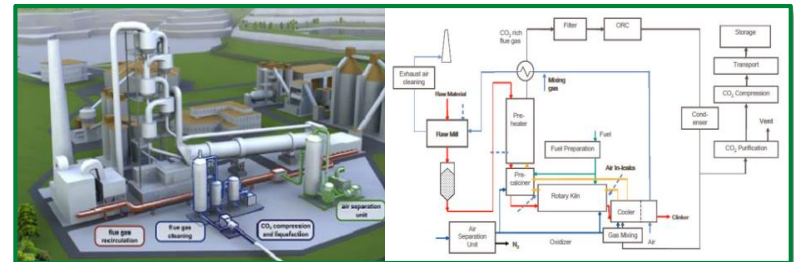
Oxyfuel technology enriches flue-gases with CO₂: enhances proportion in flue-gas stream in kiln from about 30% to >75%

Funding via industry as well as national and international mechanisms (~50m€)

Great R&D contribution by HeidelbergCement

- Prototype cooler by HeidelbergCement
- Prototype calciner by Italcementi

Oxyfuel utilizes solely CO₂ as process gas.
In order to burn primary and secondary fuels, pure oxygen is added



ecra

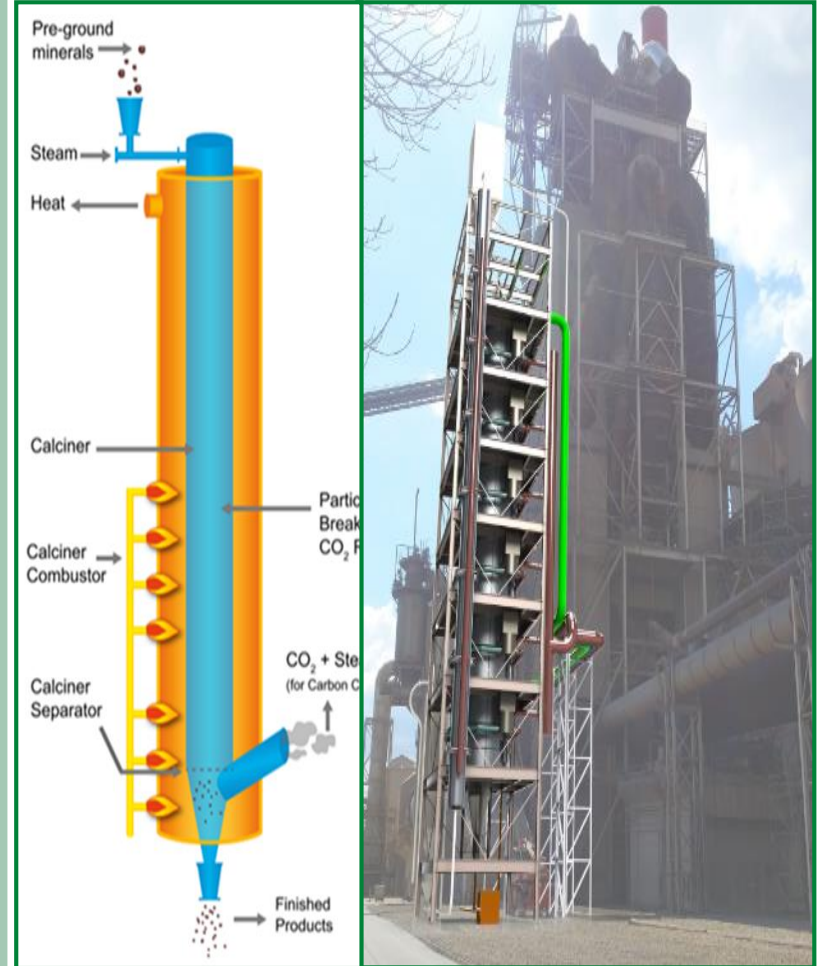
european cement research academy

CO₂ separation@calcining at LEILAC

LEILAC plant separates CO₂ from calcination from other flue-gas

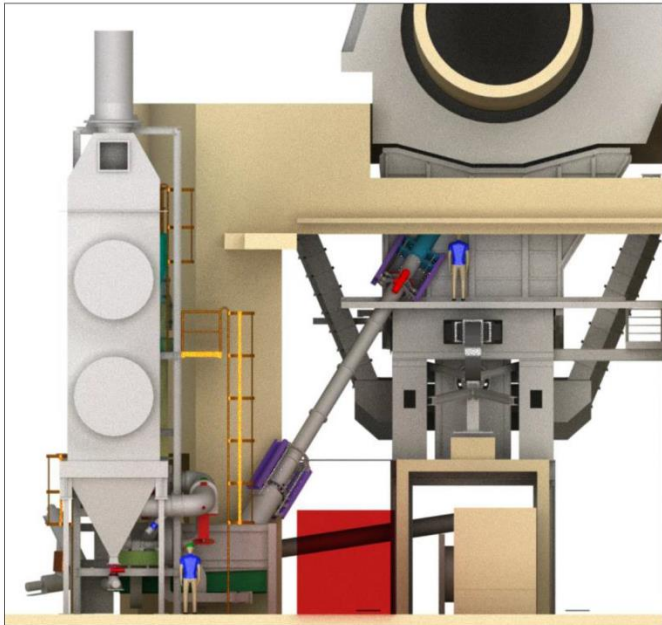
Rawmeal is indirectly heated to about 900°C . Proven process for MgO production.

Funding via EU (Horizon 2020) of over €12m, demonstration plant in Lixhe, Belgium with 10 tph capacity.



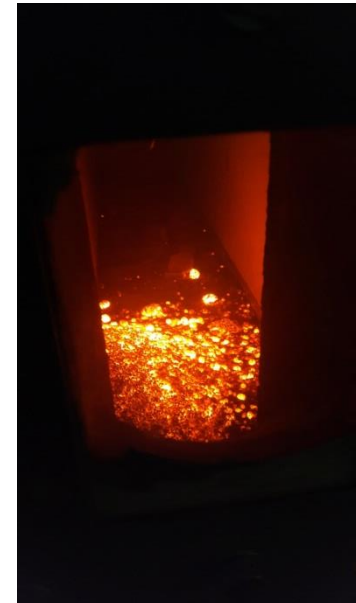
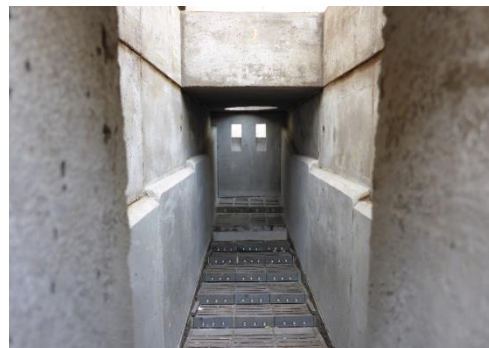
CEMCAP PROJECT: PILOT SCALE CLINKER COOLER IN CO₂ RICIRCULATION

This pilot scale test has been organized in the Heidelberg cement plant of Hannover while the project and the installation are supplied by IKN.



2 m² aerated area

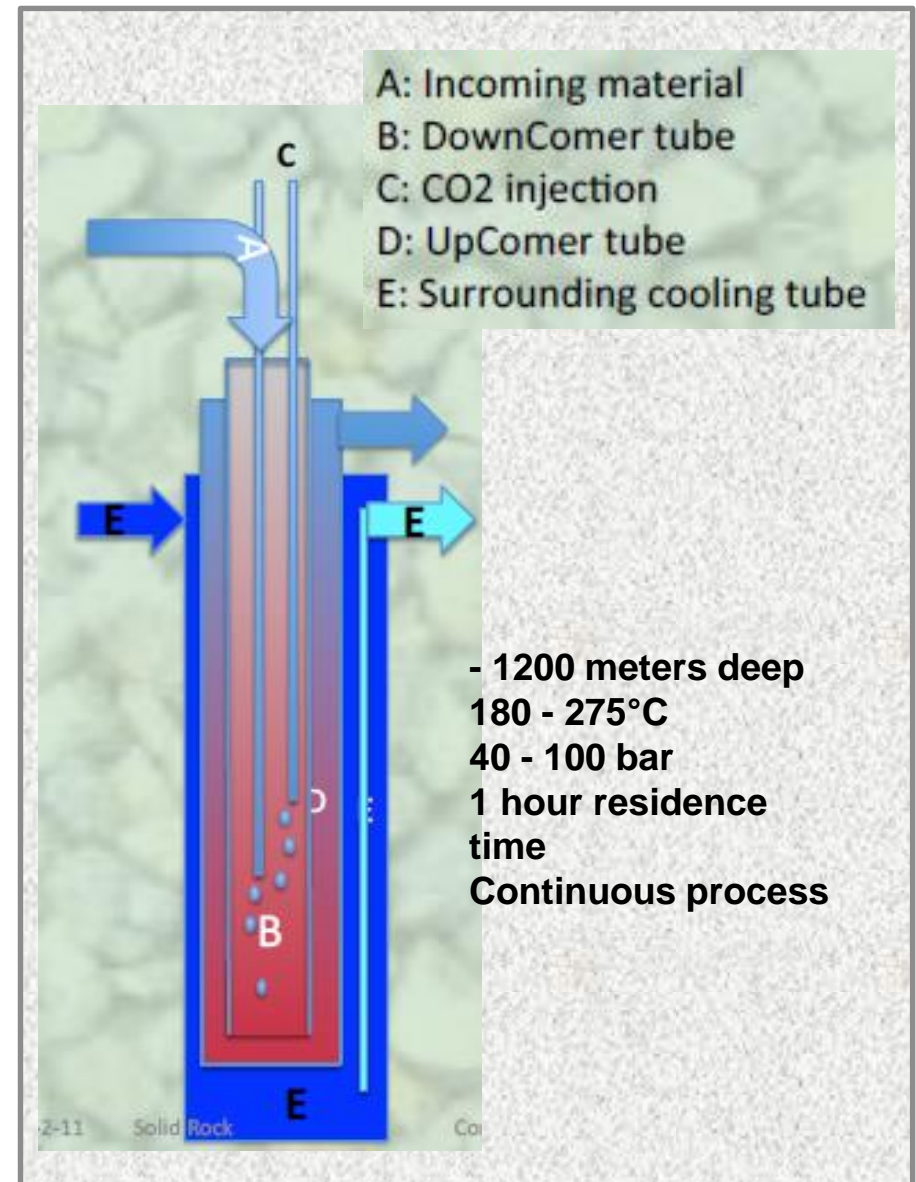
CCS in cement industry / Rob van der Meer / 6/4/2017



HEIDELBERGCEMENT

Natural mineral carbonation

- **CO₂-uptake by mineral products like basalt, olivine and steelslag**
- **Generated products (high in blaines):**
 - amorphous silica
 - crystalline magnesium-carbonate
- **R&D program will start in 2017**
 - Funding might come from BMBF
 - Therefore German based partners from RWTH Aachen and IASS Potsdam



R&D Sweden micro-algae growing on CO2 from flue-gas

RESULTS

- Microalgae react positive to flue-gas of cement kilns
- Algal biomass meets criteria for healthy fishfeed

algoland 
CEMENTA
HEIDELBERGCEMENT Group



Economics

■ HeidelbergCement investments in last 10 years

- > 4 b€ in improvement/expansion of installations: all BAT level
- > 800 m€ in R&D, of which > 50% carbon related

■ Research partners

- Mainly European based universities (Italy, Germany, etc.)
- European research institutes: Sintef, TNO, etc.
- European equipment suppliers: FLS, ThyssenKrupp, FCB, etc.

■ Innovative cement and concrete equipment producers are all located in Europe

■ Cement plant of 2050 will have an additional chemical plant attached to it, for example:

- CO₂ capture
- Oxygen production
- Methane/Methanol/Algae production facility

Thank you for your attention !



Contact:

Rob van der Meer
Director Public Affairs
Global Environmental Sustainability
HeidelbergCement Group

Phone: +32 475 652950
rob.vandermeer@heidelbergcement.com