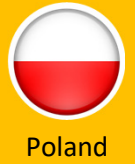


Climate change



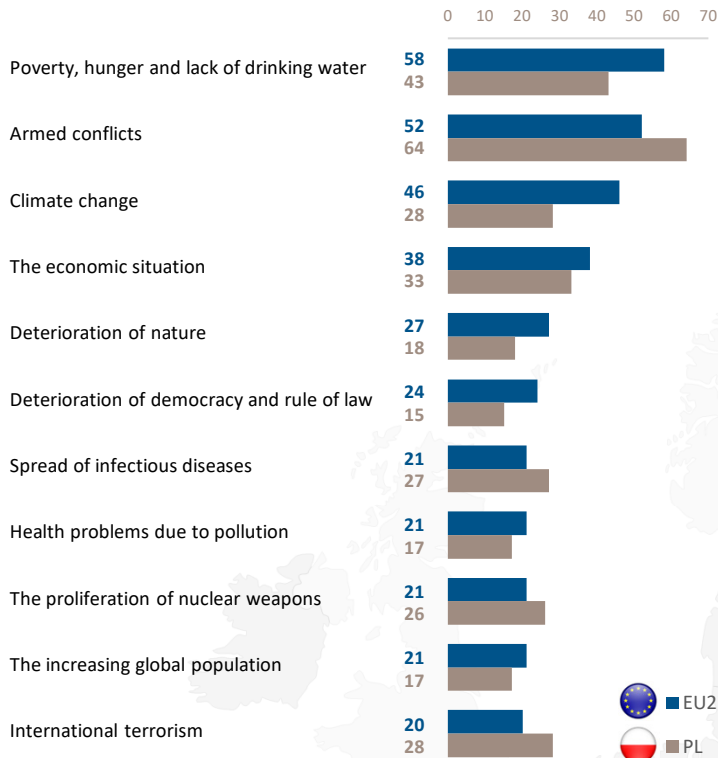
TOTAL EU27 26,358 interviews

Poland 1,026 interviews | Fieldwork: 11 May - 28 May 2023

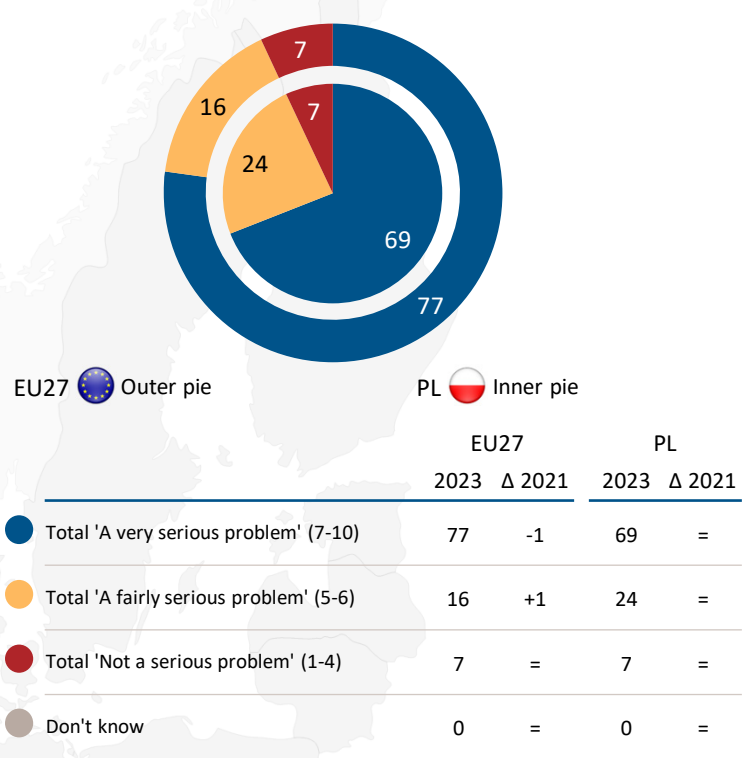
Methodology (PL): Face-to-face

1. EUROPEAN PERCEPTIONS OF CLIMATE CHANGE

QC1T. Which of the following do you consider to be the single most serious problem facing the world as a whole? Which others do you consider to be serious problems? (MAX. 4 ANSWERS) (%)

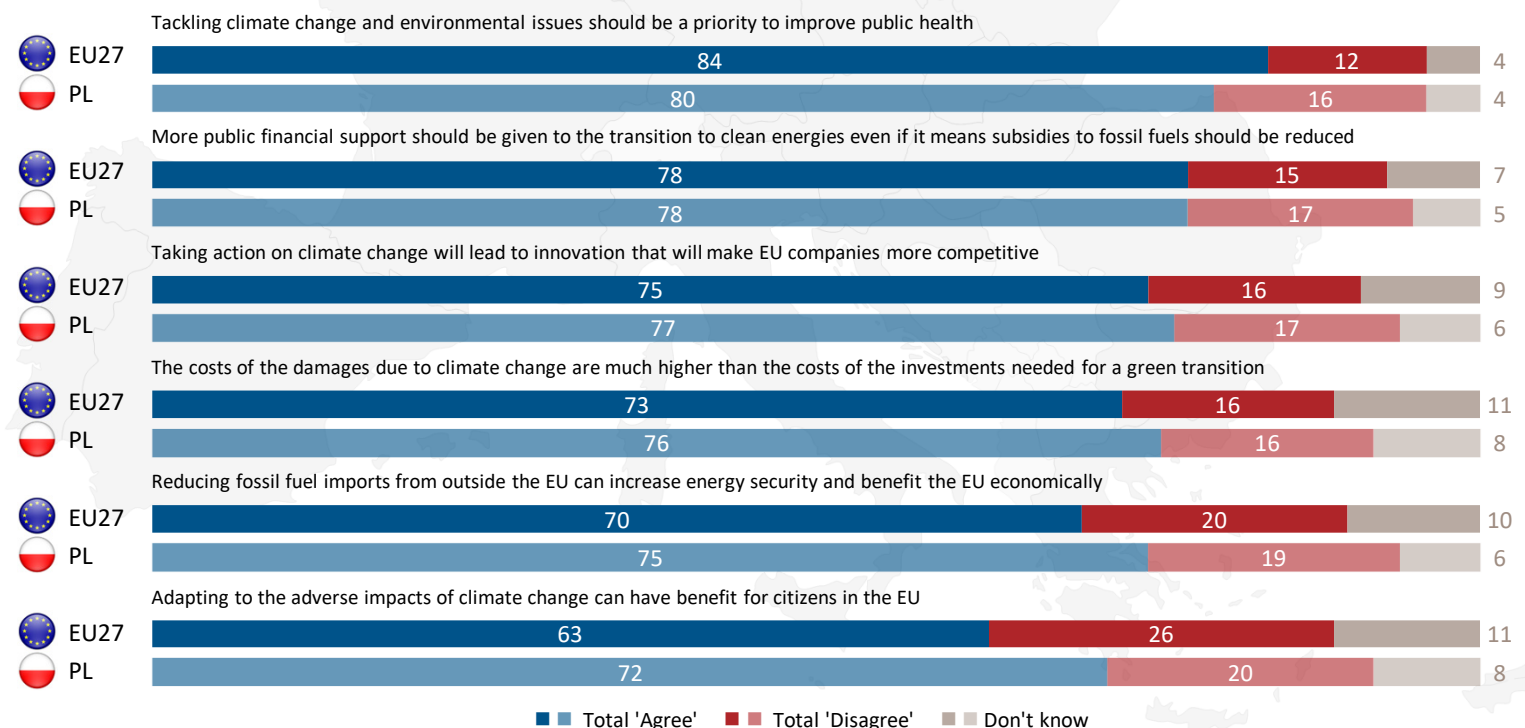


QC2. And how serious a problem do you think climate change is at this moment? Please use a scale from 1 to 10, with '1' meaning it is "not at all a serious problem" and '10' meaning it is "an extremely serious problem". (%)



2. ATTITUDES TO FIGHTING CLIMATE CHANGE

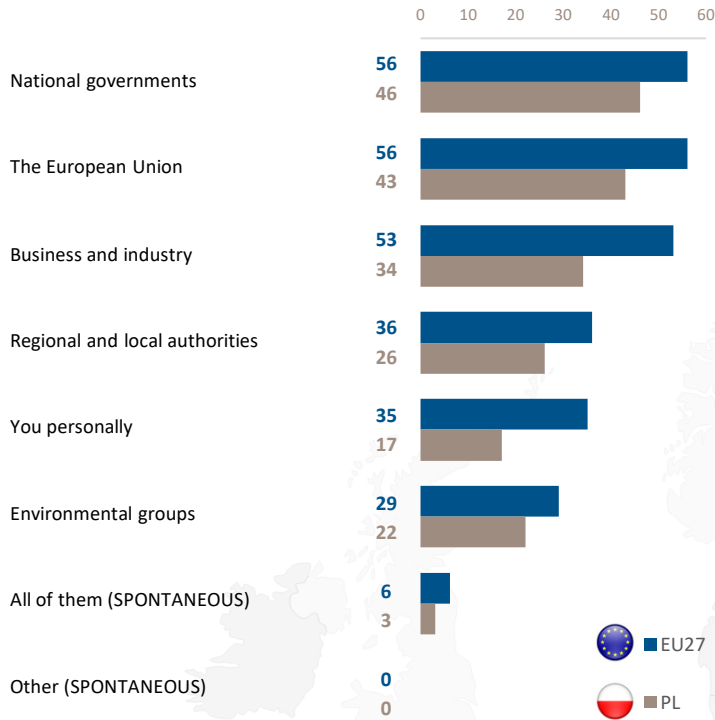
QC4. To what extent do you agree or disagree with each of the following statements? (%)



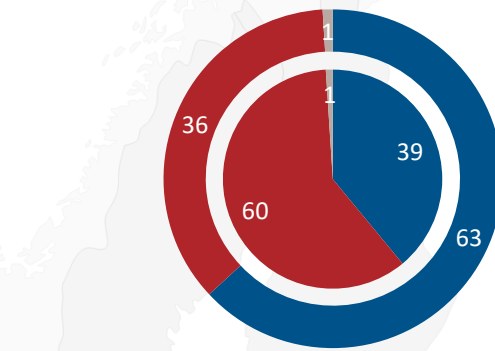


3. TAKING ACTION ON CLIMATE CHANGE

QC3. In your opinion, who within the EU is responsible for tackling climate change? (MULTIPLE ANSWERS POSSIBLE) (%)

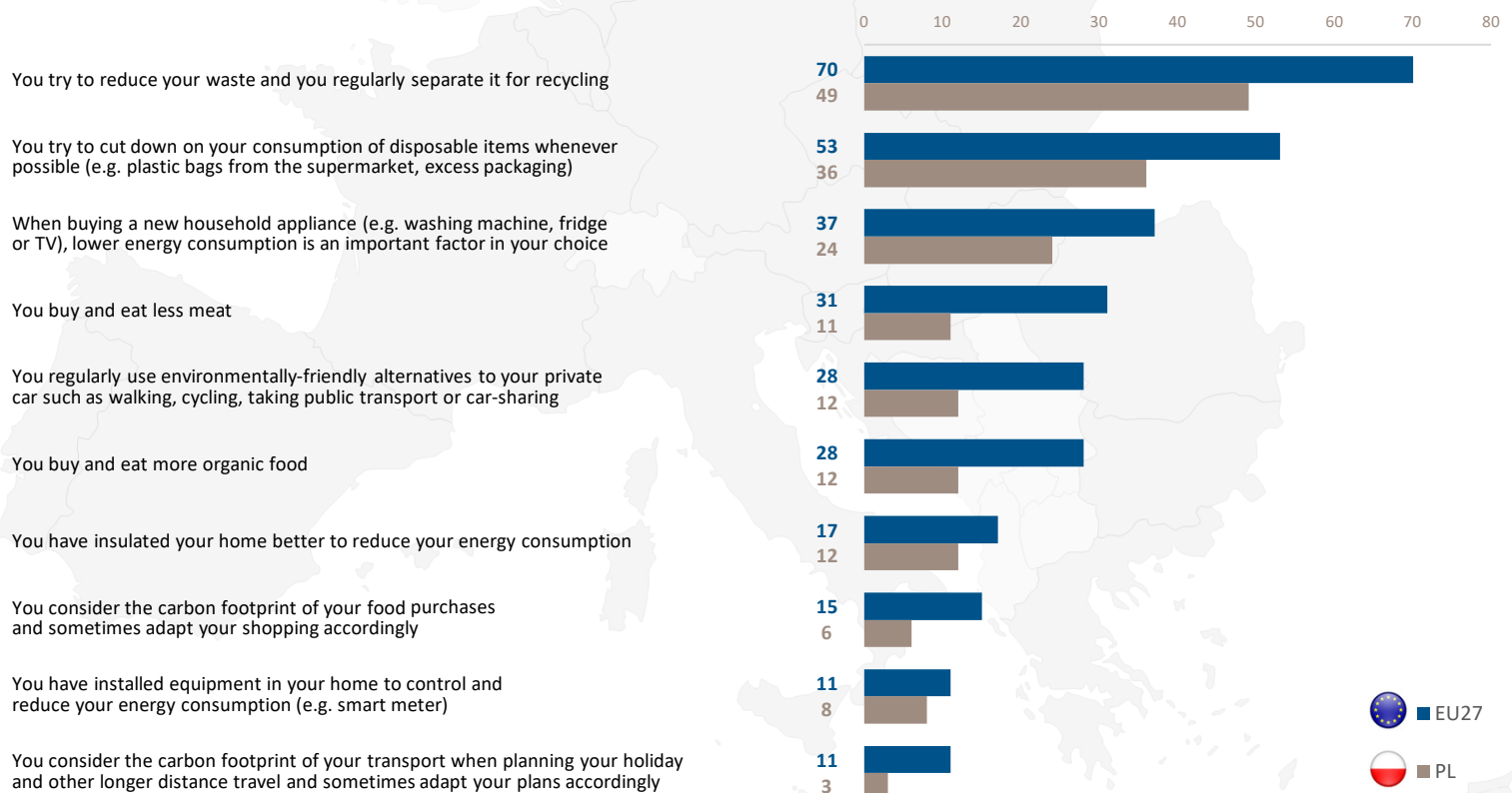


QC5. Have you personally taken any action to fight climate change over the past six months? (%)



	EU27		PL	
	2023	Δ 2021	2023	Δ 2021
Yes	63	-1	39	-13
No	36	+1	60	+13
Don't know	1	=	1	=

QC6. Which of the following actions, if any, apply to you? (MULTIPLE ANSWERS POSSIBLE) (%)



(Top 10 answers)

Climate change



Poland

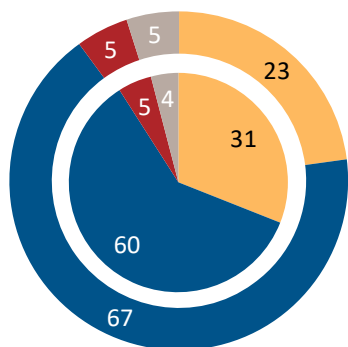
TOTAL EU27 26,358 interviews

Poland 1,026 interviews | Fieldwork: 11 May - 28 May 2023

Methodology (PL): Face-to-face

4. LOOKING TO THE FUTURE

QC7. Do you think that the (NATIONALITY) government is doing enough, not enough or too much to tackle climate change? (%)

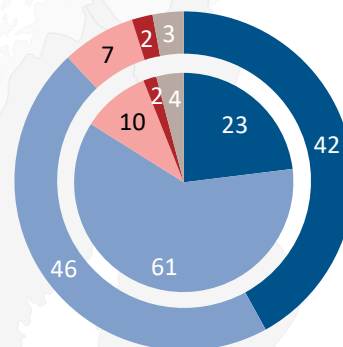


EU27 Outer pie

PL Inner pie

	EU27		PL	
	2023	Δ 2021	2023	Δ 2021
Enough	23	+4	31	+3
Not enough	67	-8	60	-7
Too much	5	+2	5	+2
Don't know	5	+2	4	+2

QC10. To what extent do you agree or disagree with the following statement: We should reduce greenhouse gas emissions to a minimum while offsetting the remaining emissions, for instance by increasing forested areas, to make the EU economy climate-neutral by 2050. (%)



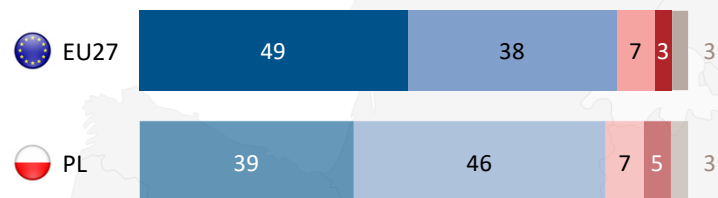
EU27 Outer pie

PL Inner pie

	EU27		PL	
	2023	Δ 2021	2023	Δ 2021
Totally agree	42	-5	23	-5
Tend to agree	46	+3	61	-3
Tend to disagree	7	+1	10	+4
Totally disagree	2	=	2	+2
Don't know	3	+1	4	+2

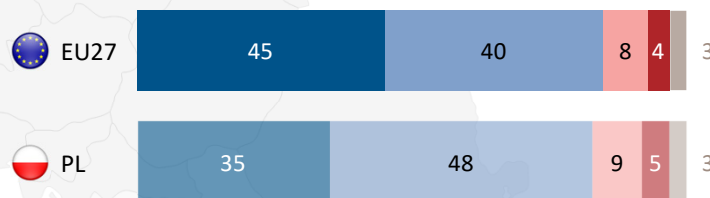
QC8. How important do you think it is that the following authorities take action and increase the amount of renewable energy used, such as wind or solar power, by 2030? (%)

The European Union

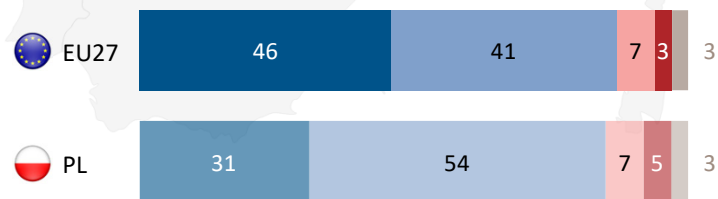


QC9. How important do you think it is that the following authorities take action to improve energy efficiency by 2030 (e.g. by encouraging people to insulate their home, install solar panels or buy electric cars)? (%)

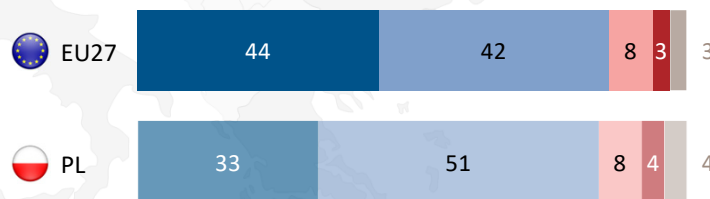
The European Union



The (NATIONALITY) government



The (NATIONALITY) government



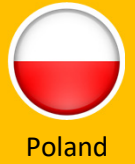
Very important Fairly important
 Not very important Not at all important
 Don't know

Very important Fairly important
 Not very important Not at all important
 Don't know

Climate change

TOTAL EU27 26,358 interviews

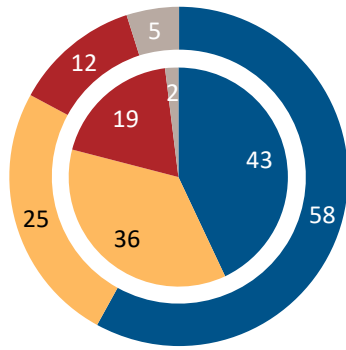
Poland 1,026 interviews | Fieldwork: 11 May - 28 May 2023



Methodology (PL): Face-to-face

5. THE EU AND THE ENERGY CRISIS

QC11. With energy price spikes and restrictions on gas supply due to the actions of Russia, how should the EU and its Member States respond in terms of green energy policy? (%)

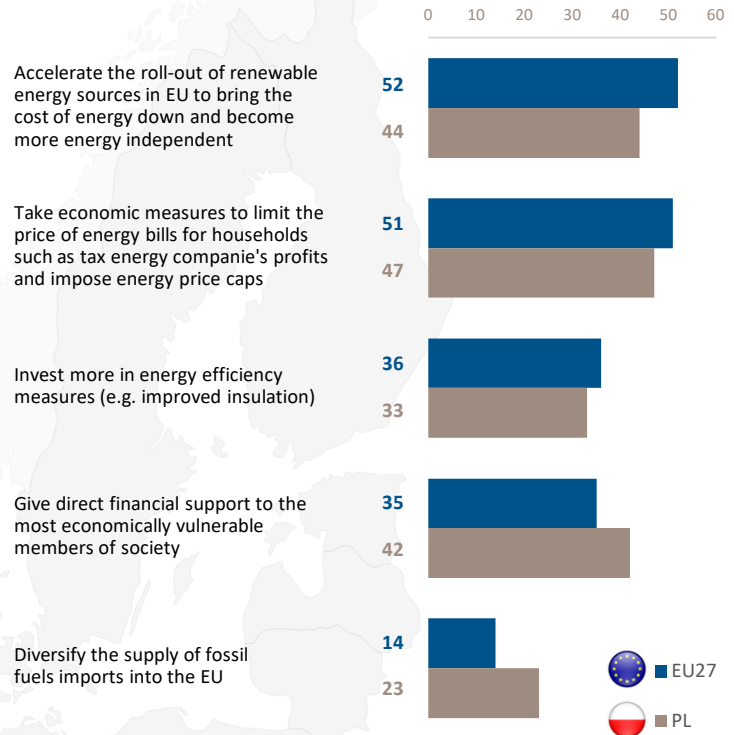


EU27 Outer pie

PL Inner pie

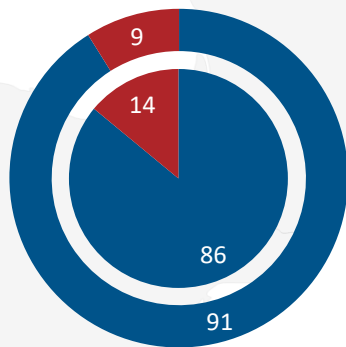
- We should accelerate the use of renewable energy sources, increase energy efficiency, and speed up the transition to a green economy
- We should maintain the same pace of transition to a green economy
- We should return to using more fossil fuels during the energy crisis and slow down the transition to the green economy
- Don't know

QC12T. In which of the following ways should the EU and the Member State governments respond to relieve the economic pressure caused by the energy crisis? Firstly? And then? (%)



6. EUROPEANS AND THEIR NATURAL ENVIRONMENT

QC13. How easy or difficult is it for you to access nature and green spaces? (%)

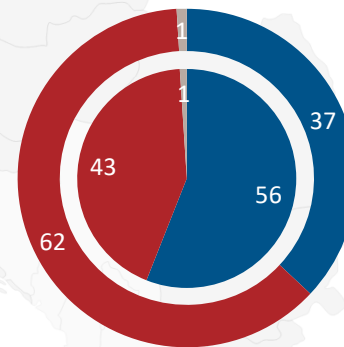


EU27 Outer pie

PL Inner pie

- Total 'Easy'
- Total 'Difficult'
- Don't know

QC14. How exposed are you personally to environmental and climate related risks, and threats (e.g. fires, floods, pollution, extreme weather conditions, etc.)? (%)



EU27 Outer pie

PL Inner pie

- Total 'Exposed'
- Total 'Not exposed'
- Don't know