

Carbon Capture and Storage

ECCP Working Group EU ETS

9 March 2007

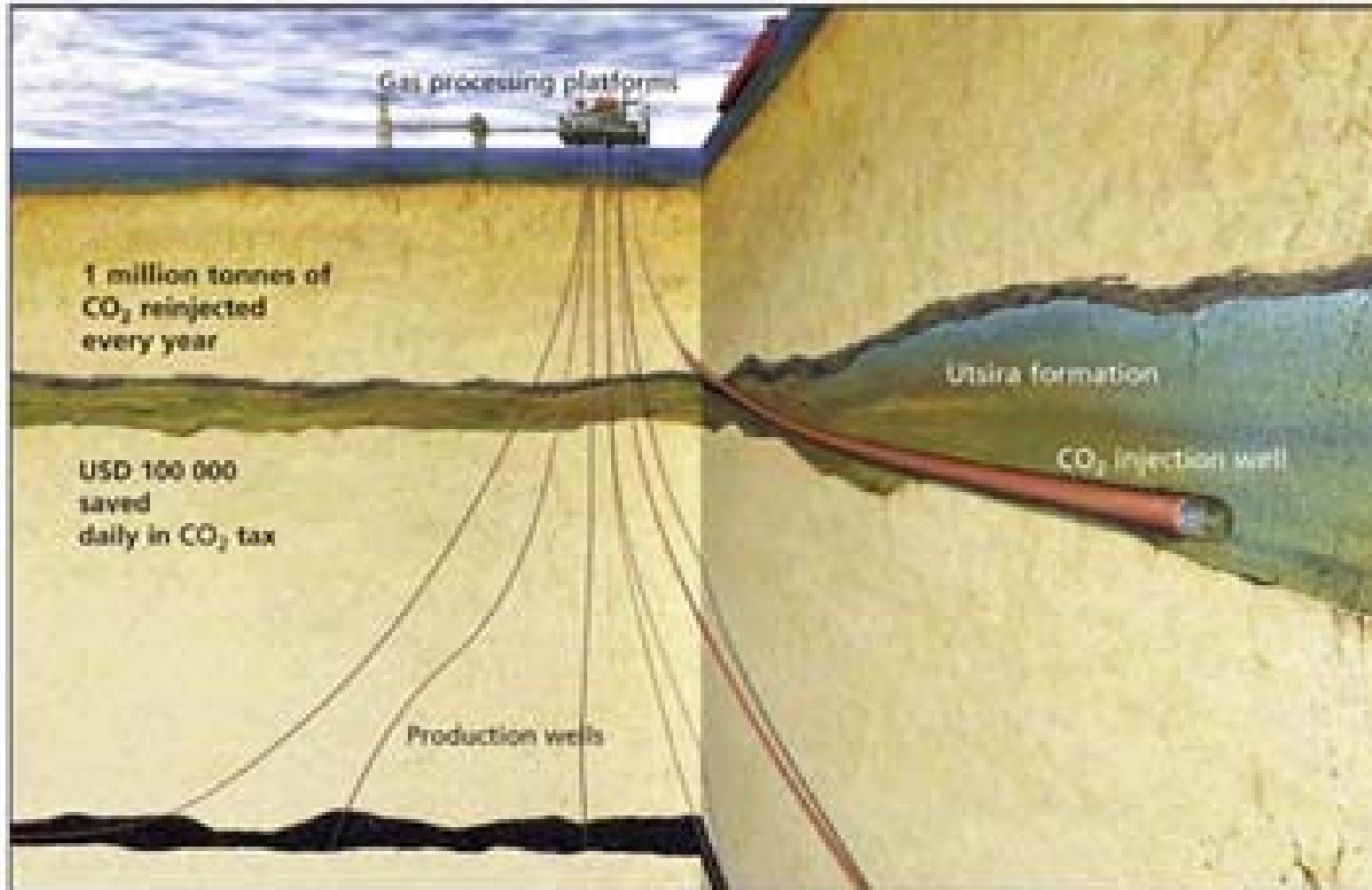
Hans-Aasmund Frisak

Senior Adviser

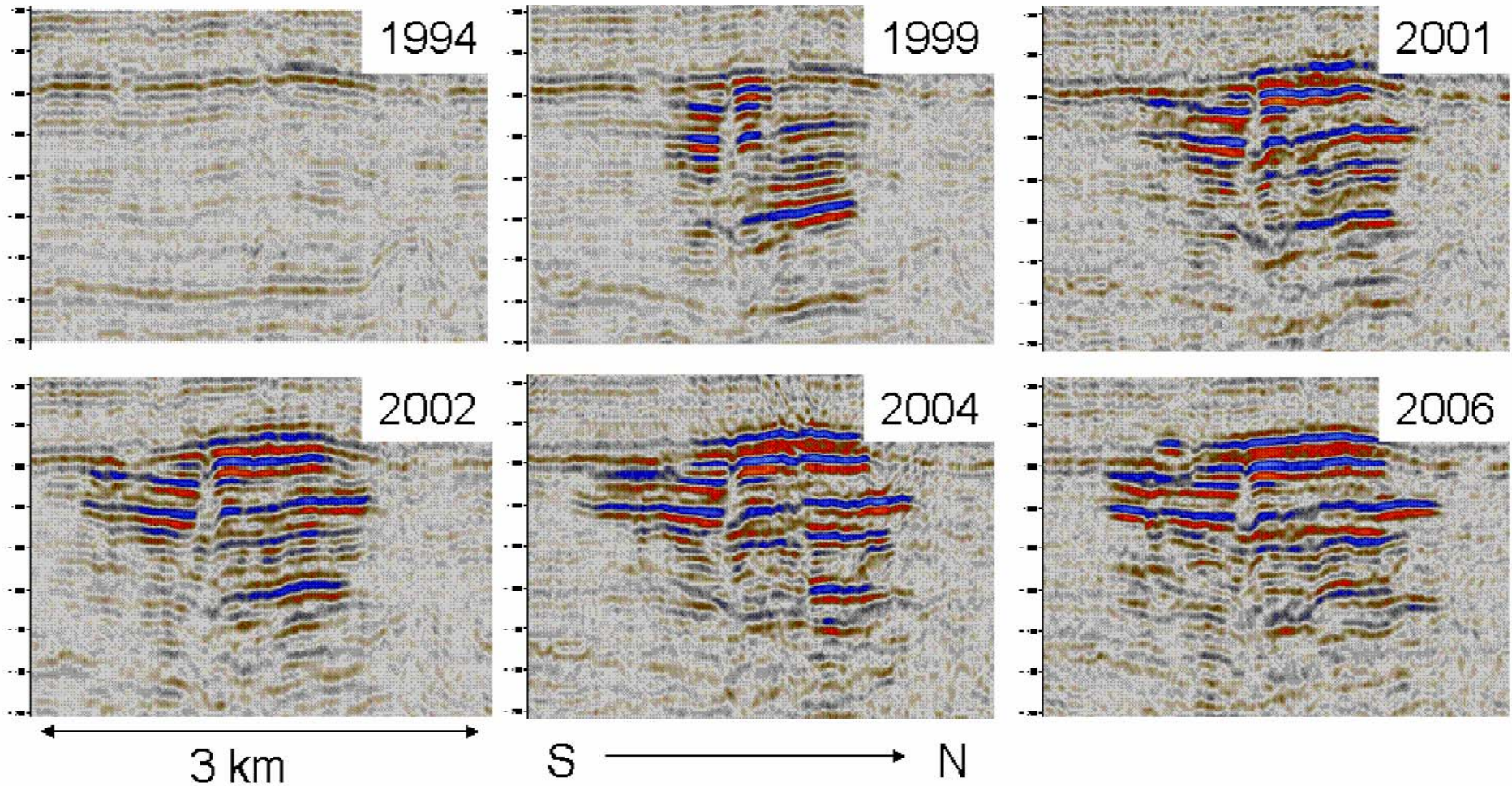
5 CCS projects

- Sleipner (1 million tonns/year)
- In Salah (1,2 million tonns/year)
- Snøhvit 2007 (700 000 tonns/year)
- Mongstad CHP 2010/14 (1,3 million tonns/year)
- Halten CO2 Project 2012 (2,5 millon tonns/year)

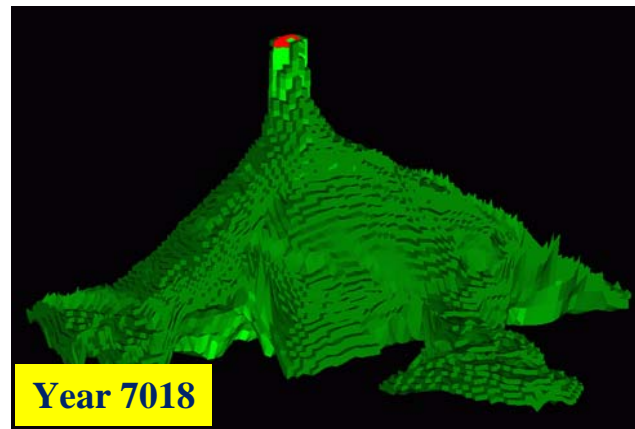
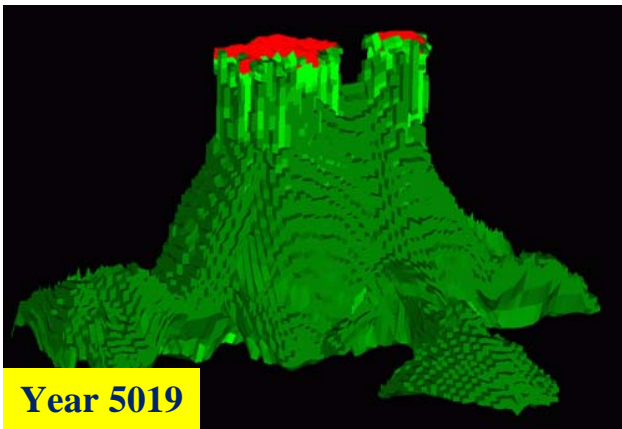
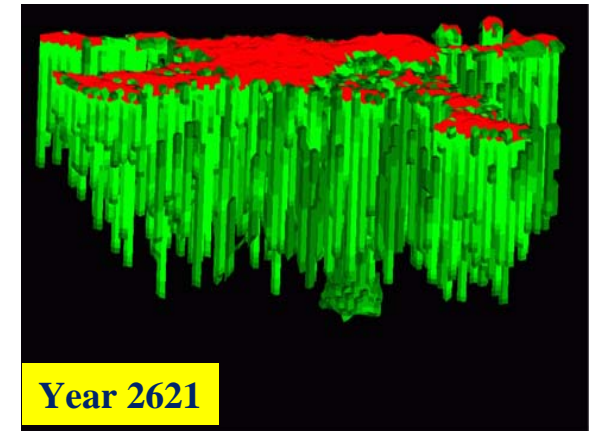
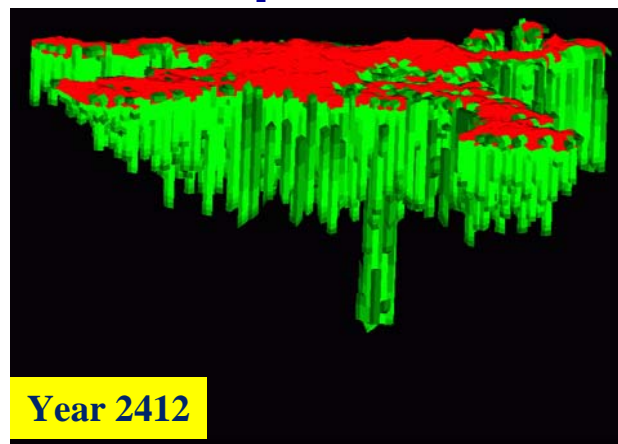
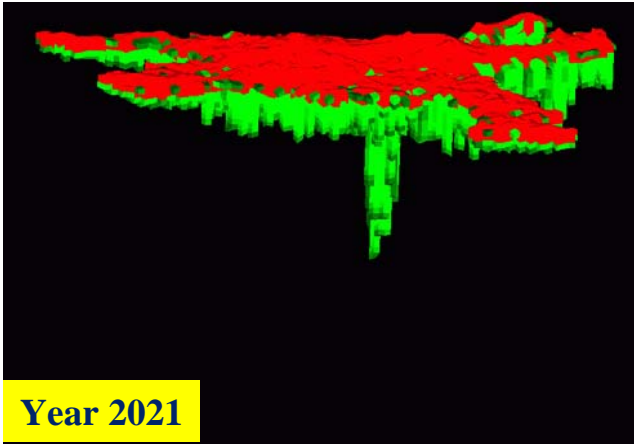
Sleipner storage



4D seismic can be used to monitor the CO₂ plume.



**A part of the CO₂ will get stuck in the pores...
Some will dissolve in the pore water.....**



..... and some will precipitate as carbonates.....

Kilde: Gemini No. 1, 2004 (NTNU and Sintef)

In Salah in Algeria 1,2 million tonns/year



Snøhvit LNG – Storing 700.000 tons CO₂ annually



Snøhvit CO2 pipeline

- 153km with diameter 200mm to sub-sea injection well



Halten CO2 Project Joint Statoil Shell project



Halten CO2 Project 2,5 million tonns/year

Joint Statoil Shell project

The first and largest CO2 project with capture from day one

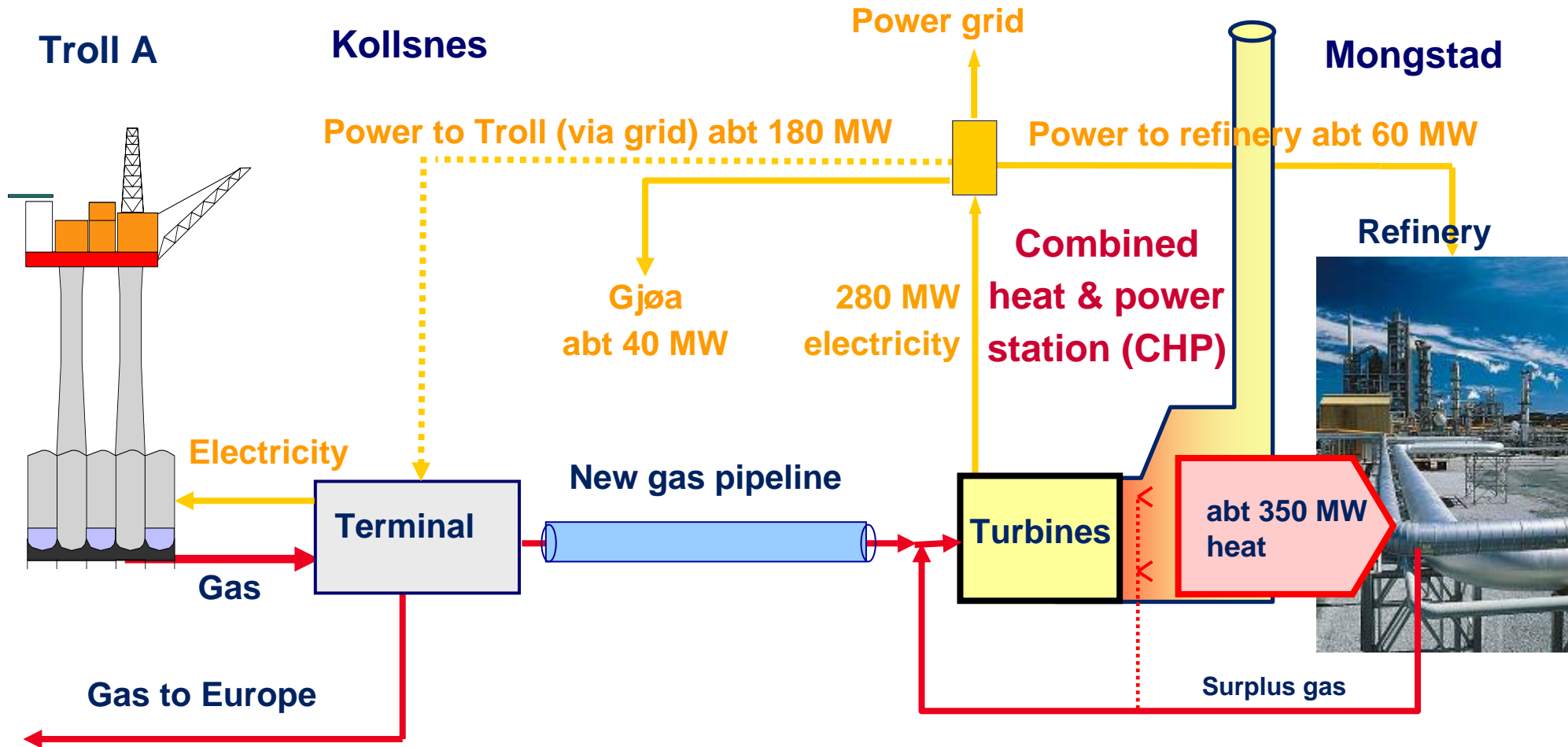


Mongstad CHP 1,3 million tonns/year



Mongstad CHP station

Technical concept



Energy efficiency CHP station : 70-80%