

Status of development of CDM and JI markets

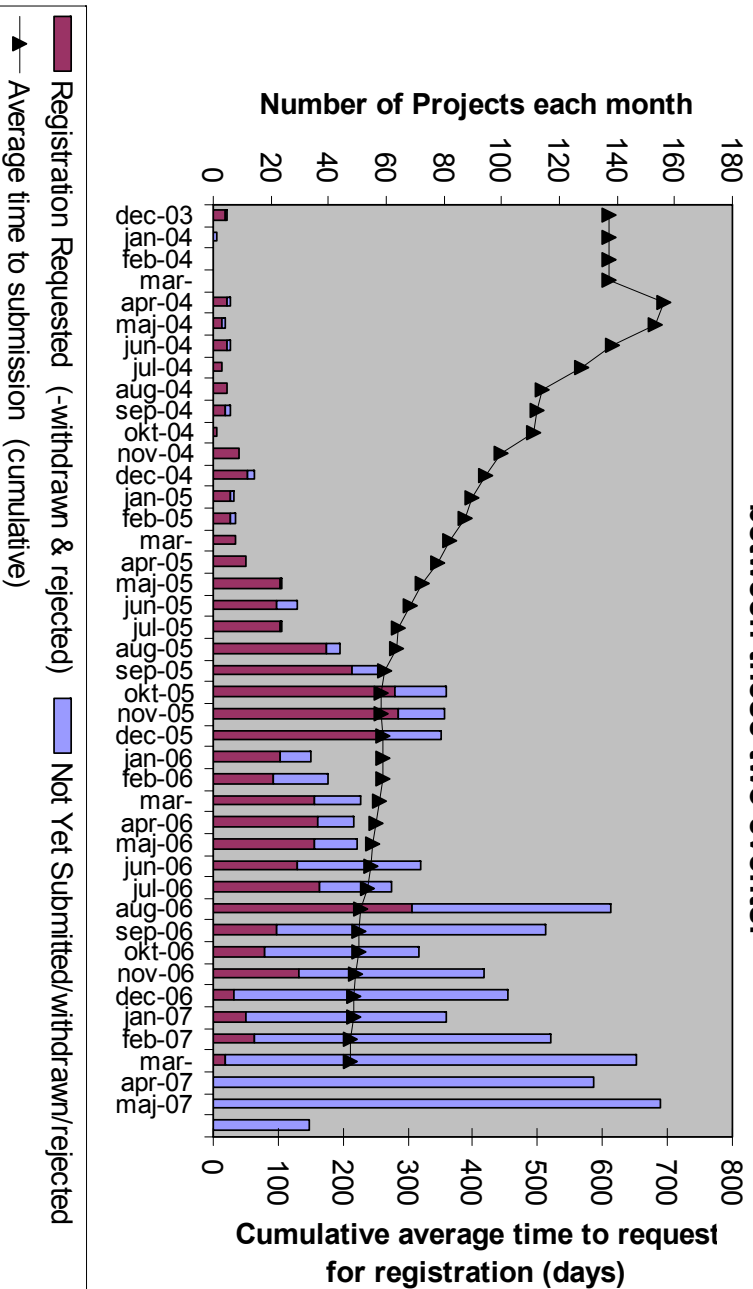
Jørgen Fenhann
UNEP Risoe Centre, Denmark
j.fenhann@risoe.dk

4th meeting of the ECCP working group on emission trading
Linking with emissions trading schemes of third countries
Brussels, 14-15 June, 2007

Contents

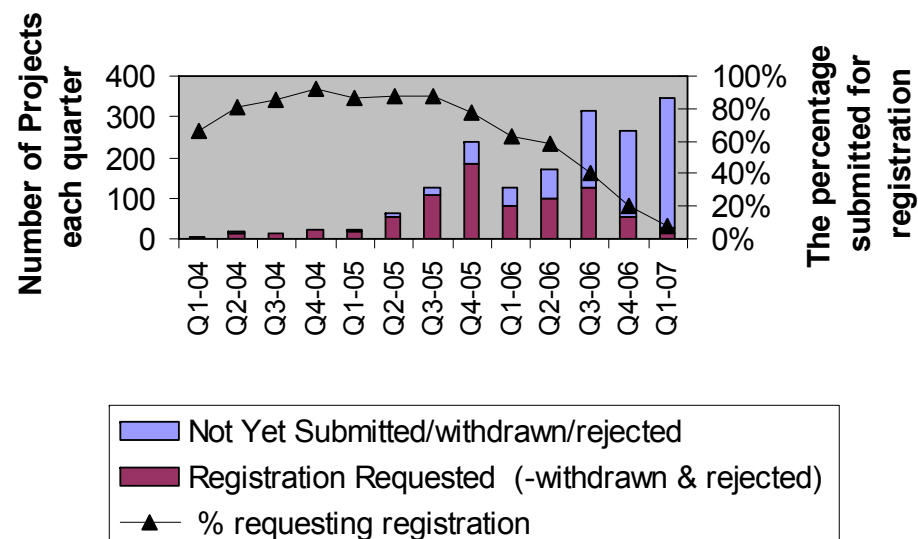
- How fast is the CDM Pipeline growing?
- How big a share of the CDM projects get registered?
- How far have the projects proceeded in the CDM project cycle?
- Do the projects get the expected CERs issued?
- Available CERs in 2012?
- What is the sectoral distribution of the CDM projects?
- What is the geographical distribution of the CDM projects?
- Who is buying CERs?
- JI speed, track 2, and active host countries & sectors

Number of CDM projects starting the public comments period each month, the number of them that have requested registration, and the cumulative timelag between these two events.



About 85% of the projects get registered

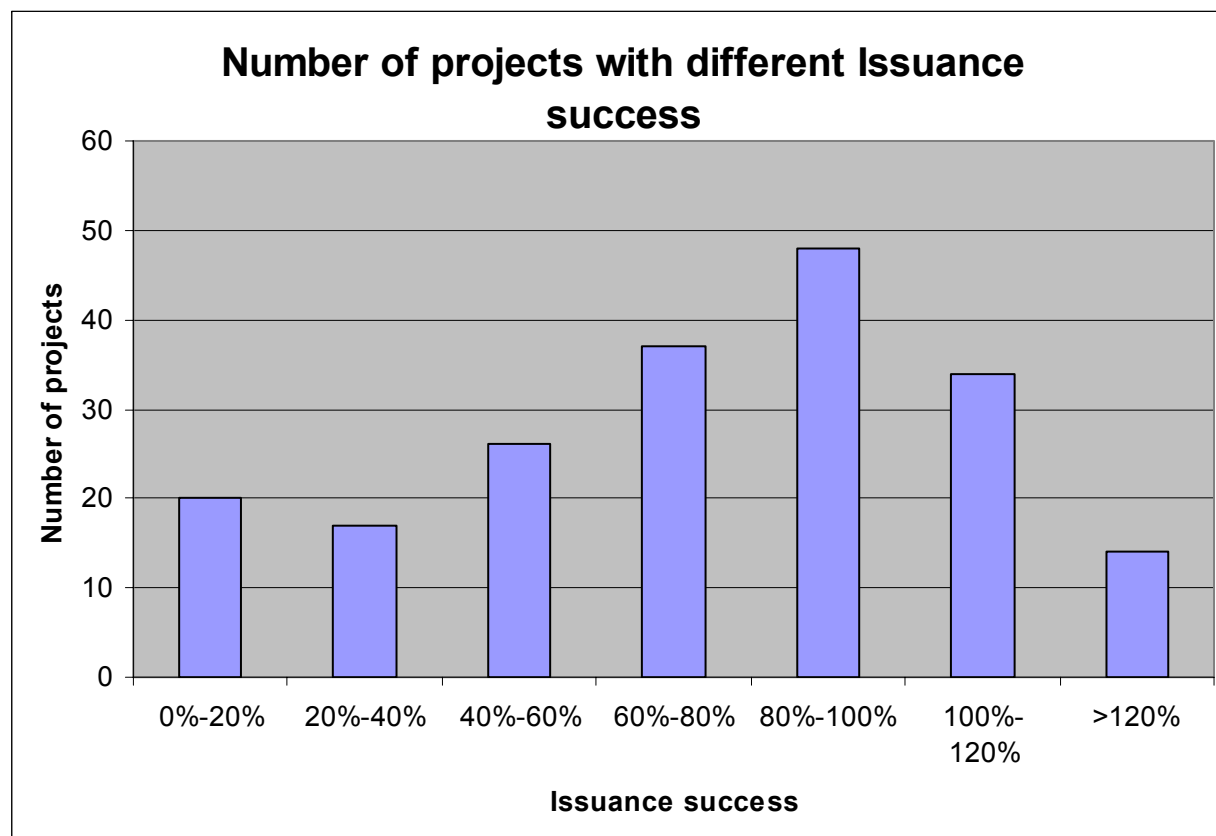
Number of CDM projects starting the public comments period each quarter, the number of them that have requested registration, and the fraction in % as a curve



Status of CDM projects: 2056 in the pipeline

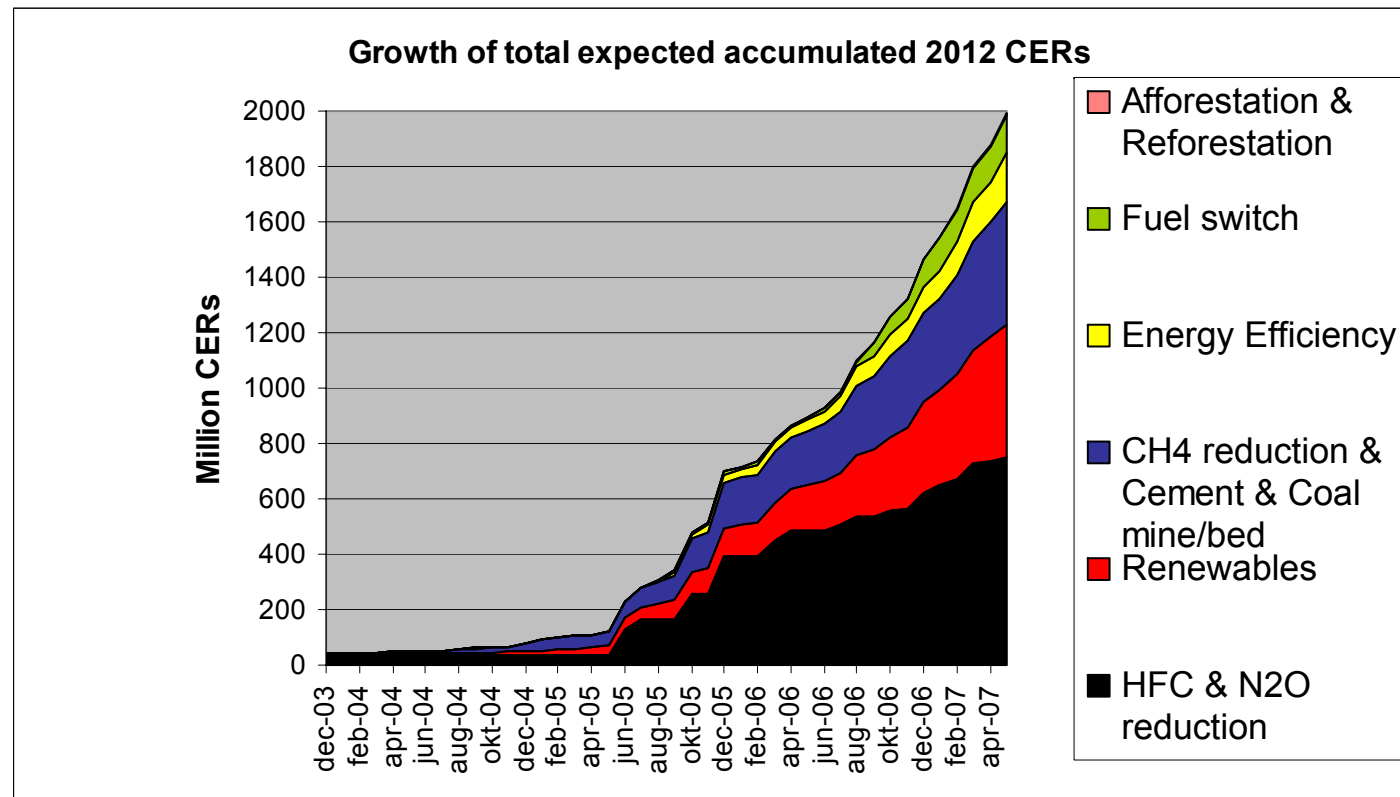
Status of CDM projects as of 11 June 2007	Number
At validation	1219
Request for registration	75
Request for review	28
Correction requested	11
Under review	8
Total in the process of registration	122
Withdrawn	5
Rejected by EB	14
Registered, no issuance requested	472
Registered, request for CERs	18
Registered, correction requested	0
Registered, request for CER issuance review	10
Registered, under review	0
Registered. CER issued	196
Total registered	696
Total number of projects (incl. rejected & withdrawn)	2056

Not all expected CERs are issued.
The average "Issuance Success" is 83.4%.



Type	CDM project with CERs issued		
	Projects	Issued kCERs	Issuance success
Afforestation			
Agriculture	29	1934	48%
Biogas	2	228	84%
Biomass energy	62	5980	90%
Cement	4	469	69%
Coal bed/mine methane			
Energy distribution			
EE households			
EE industry	7	311	82%
EE own generation	8	693	80%
EE service	1	2	63%
EE supply side	2	30	83%
Fossil fuel switch	3	240	85%
Fugitive	1	278	80%
Geothermal	2	102	20%
HFCs	8	28919	89%
Hydro	32	2237	86%
Landfill gas	9	2111	34%
N ₂ O	3	9190	118%
Others			
PFCs			
Reforestation			
Solar			
Tidal			
Transport			
Wind	23	1444	70%
Total	196	54169	83,4%

Expected CERs at 2012 from present projects



2847 MCERs issued in 2012, assuming 500 MCERs extra annually in 2007-2010

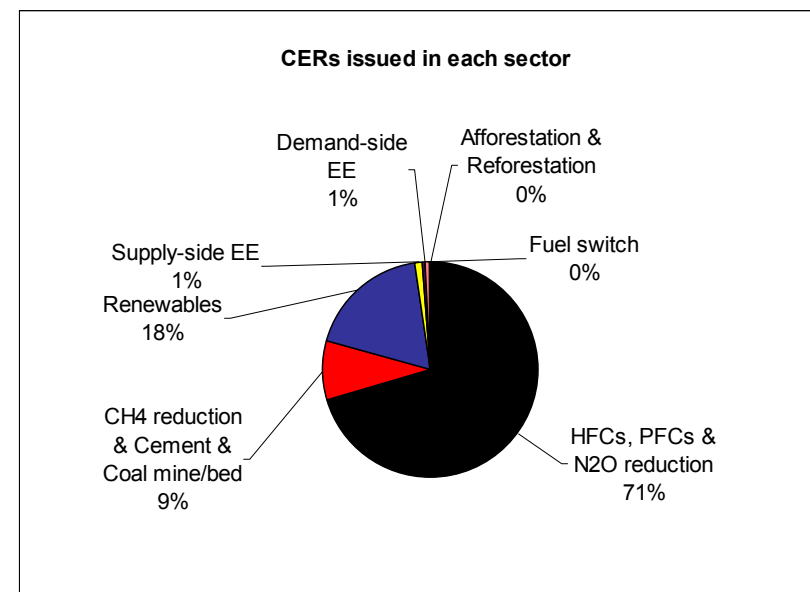
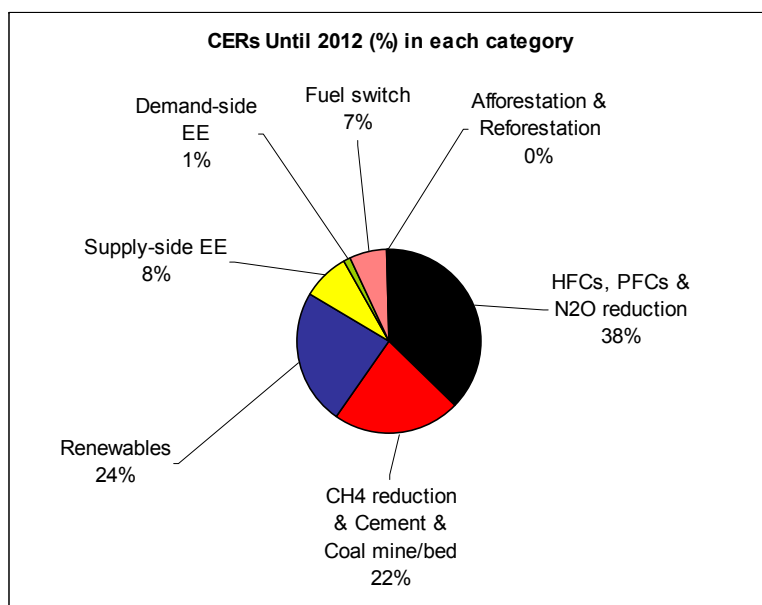
	Existing projects	Projection End 2012
CER's	Million CERs	
Total 2012 CERs expected from projects in the Pipeline	2015	4015
Total amount of CERs issued	54	2847
Total amount of CERs expected to be issued in these projects	65	
Total issuance success	83,4%	83,4%
Share Of Proceeds (SOP) for the Adaptation Fund	1,1	57
Total amount of CERs expected at the end of 2030	6049	
Post 2012 CERs available	4034	

Sectoral distribution
of CDM projects:

Demand-side
Energy Efficiency
and Forest projects
are behind.

Type	number		CERs/yr (000)	
Hydro	426	21%	32143	10%
Biomass energy	411	20%	23515	7%
Wind	238	12%	18601	6%
Agriculture	177	9%	6650	2%
EE own generation	154	8%	28108	8%
Landfill gas	146	7%	30583	9%
Biogas	115	6%	6514	2%
EE Industry	94	5%	2802	1%
Fossil fuel switch	68	3%	24455	7%
N2O	38	2%	41789	12%
Coal bed/mine methane	36	2%	18825	6%
Cement	31	2%	4142	1%
Fugitive	21	1%	10897	3%
EE Supply side	20	1%	1164	0%
HFCs	18	1%	81328	24%
EE Service	11	1%	42	0%
Geothermal	8	0%	1774	1%
Solar	7	0%	179	0%
Afforestation & Reforestation	7	0%	831	0%
EE Households	4	0%	87	0%
Transport	4	0%	295	0%
Energy distrib.	1	0%	55	0%
PFCs	1	0%	86	0%
Tidal	1	0%	315	0%
Total	2037	100%	335181	100%
HFCs, PFCs & N2O reduction	57	3%	123203	37%
CH4 reduction & Cement & Coal mine/bed	411	20%	71096	21%
Renewables	1206	59%	83043	25%
Supply-side EE	175	8,6%	29326	8,7%
Demand-side EE	113	5,5%	3227	1,0%
Fuel switch	68	3,3%	24455	7,3%
Afforestation & Reforestation	7	0,3%	831	0,2%

Expected CERs and issued CERs by sector



Large emerging countries dominate the pipeline

- China has 530 projects in the pipeline (26.0 %)
- India has 646 projects in the pipeline (31.7 %)
- Brazil has 225 projects in the pipeline (11.0 %)
- These three countries account for 73.9 % of CERs to be issued by 2012

Total in the CDM Pipeline	Number		2012 kCERs	
Latin America	557	27,3%	333394	16,5%
Asia & Pacific	1404	68,9%	1558019	77,3%
Europe and Central Asia	17	0,8%	5986	0,3%
Sub-Sahara Africa	28	1,4%	78748	3,9%
North Africa & Middle-East	31	1,5%	39152	1,9%
Less developed World	2037	100%	2015299	100%

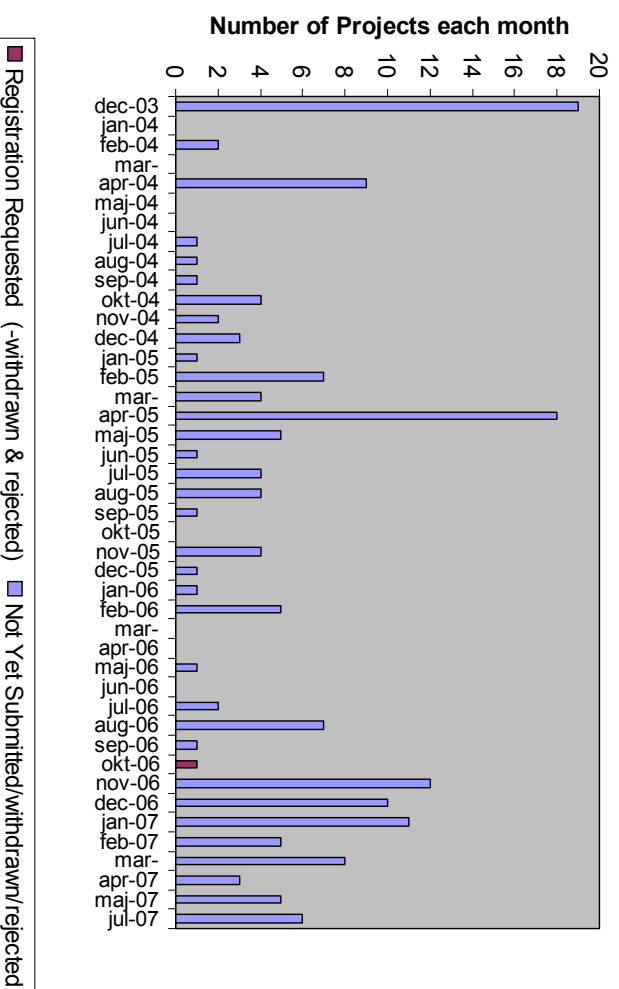
There are now 182 private and public CER buyers authorized by Annex-I countries

Top 15 buyers	Projects
EcoSecurities	146
IBRD	57
Carbon Asset Management Sweden	52
Agrinergy	41
Cargill International	40
EDF Trading	34
ENEL	34
Trading Emissions	34
Energy Systems International	28
Kommunalkredit	26
CAMCO	24
Noble Carbon	21
Mitsubishi UFJ Securities	21
Danida	18
Mitsubishi	18

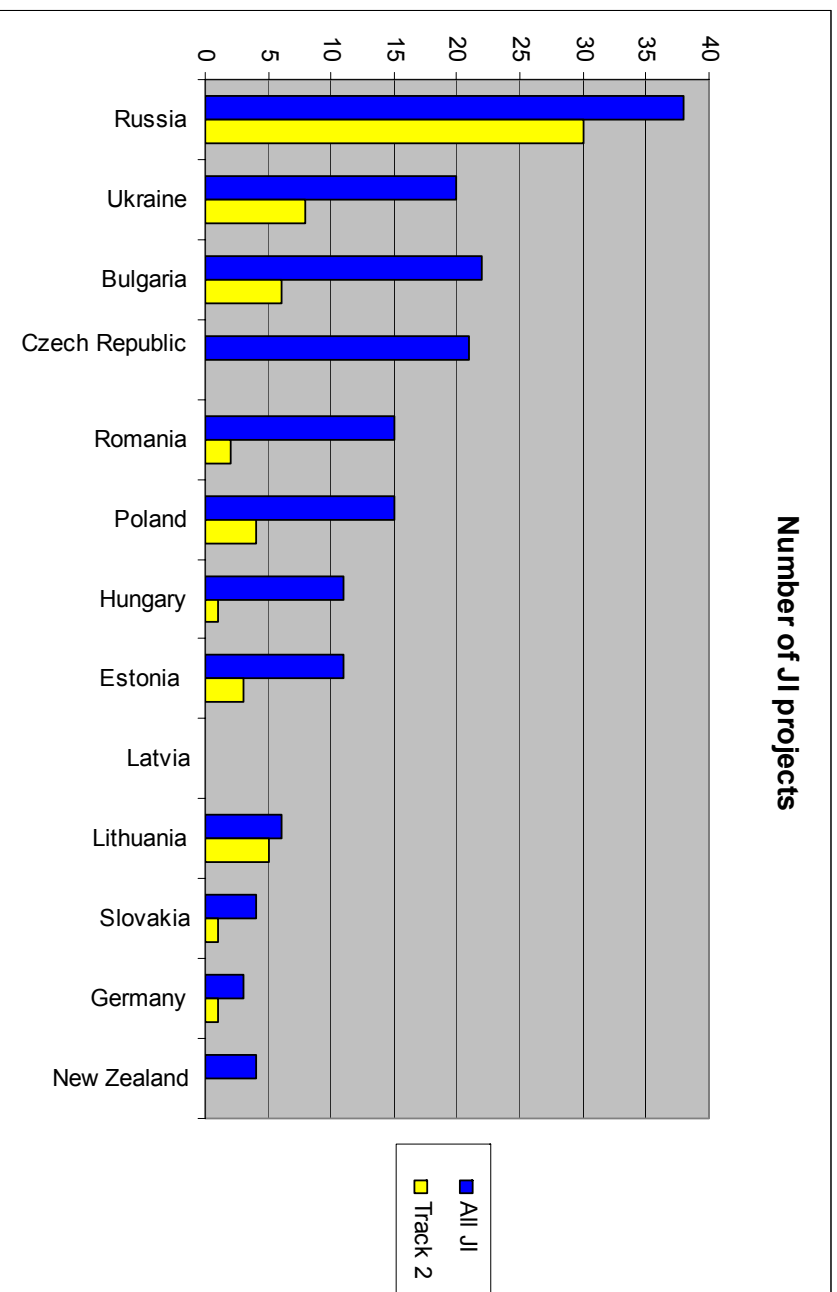
Buyers	Number of CDM projects
Austria	28
Belgium	
Canada	29
Denmark	29
Finland	13
France	17
Germany	43
Greece	
Iceland	
Ireland	1
Italy	61
Japan	159
Latvia	
Luxembourg	5
Netherlands	141
New Zealand	1
Norway	1
Portugal	
Spain	51
Sweden	59
Switzerland	67
United K.	443
CDCF	5
WBCF	
NEFCO	
CCAC16	1
n.a.	1018
Total	2172

Less than 10 new JI projects in the Pipeline each month (1st project in Oct. 2006)

Number of JI projects starting the public comments period each month, and the number of them that have requested registration



61 of the 170 JI projects are track 1, the rest is early movers.



The fugitive projects gives the largest amount of ERUs. 11 of them is leak reduction in natural gas pipelines.

JI projects	number		ERUs/yr (000)	
Hydro	28	16%	1381	4%
Wind	25	15%	2408	7%
Landfill gas	23	14%	1981	6%
Biomass energy	18	11%	2058	6%
Fugitive	17	10%	10559	33%
EE Industry	12	7%	2971	9%
Energy distrib.	9	5%	1734	5%
EE Supply side	9	5%	1531	5%
Coal bed/mine methane	9	5%	2929	9%
Fossil fuel switch	8	5%	2368	7%
Biogas	4	2%	433	1%
Geothermal	3	2%	159	0%
N2O	3	2%	1798	6%
EE Households	1	1%	70	0%
Afforestation & Reforestation	1	1%	82	0%
Cement	0	0%	0	0%
EE Service	0	0%	0	0%
HFCs	0	0%	0	0%
Solar	0	0%	0	0%
Transport	0	0%	0	0%
PFCs	0	0%	0	0%
Tidal	0	0%	0	0%
Agriculture	0	0%	0	0%
Total	170	100%	32461	100%
HFCs, PFCs & N2O reduction	3	2%	1798	6%
CH4 reduction & Cement & Coal mine/bed	49	29%	15469	48%
Renewables	78	46%	6438	20%
Energy efficiency	31	18%	6306	19%
Fuel switch	8	5%	2368	7%
Afforestation & Reforestation	1	1%	82	0%

Source: UNEP Risoe CDM/JI Pipeline Analysis and Database
UNEP Risoe Centre, 11 April 2007

For more information:
www.cdmpipeline.org
j.fenhann@risoe.dk
Phone: +45 4677 5105