

Brussels Capital Region low carbon policy



Mikaël Angé – Deputy-Head of cabinet

**Cabinet of Minister Evelyne Huytebroeck – Environment, energy and urban renovation Minister of
Brussels Capital Region**



Covenant of Mayors



Local sustainable energy

A voluntary **commitment by cities and regions** towards European energy and climate goals

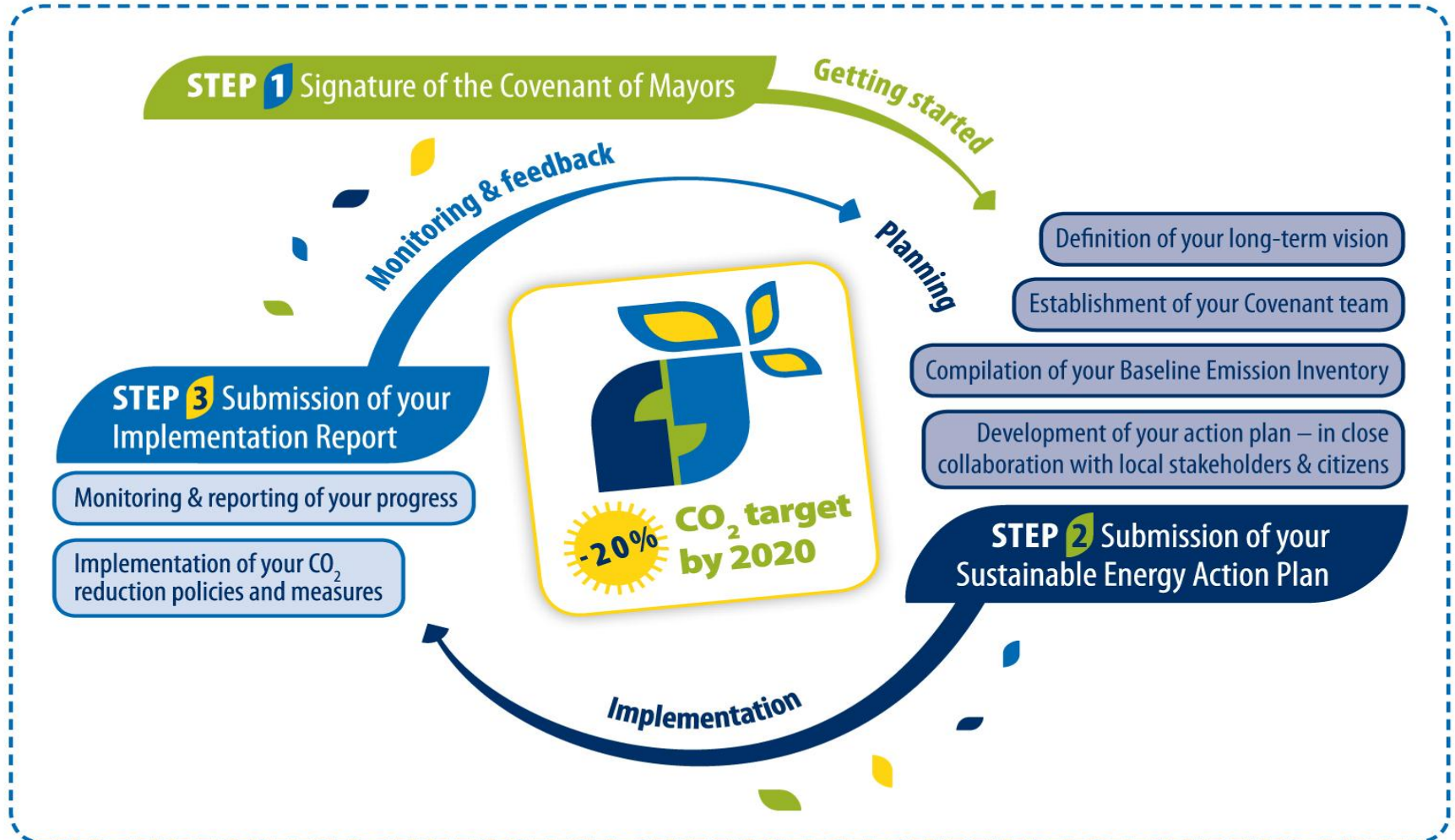


At least -20% CO2 by 2020

Covenant of Mayors



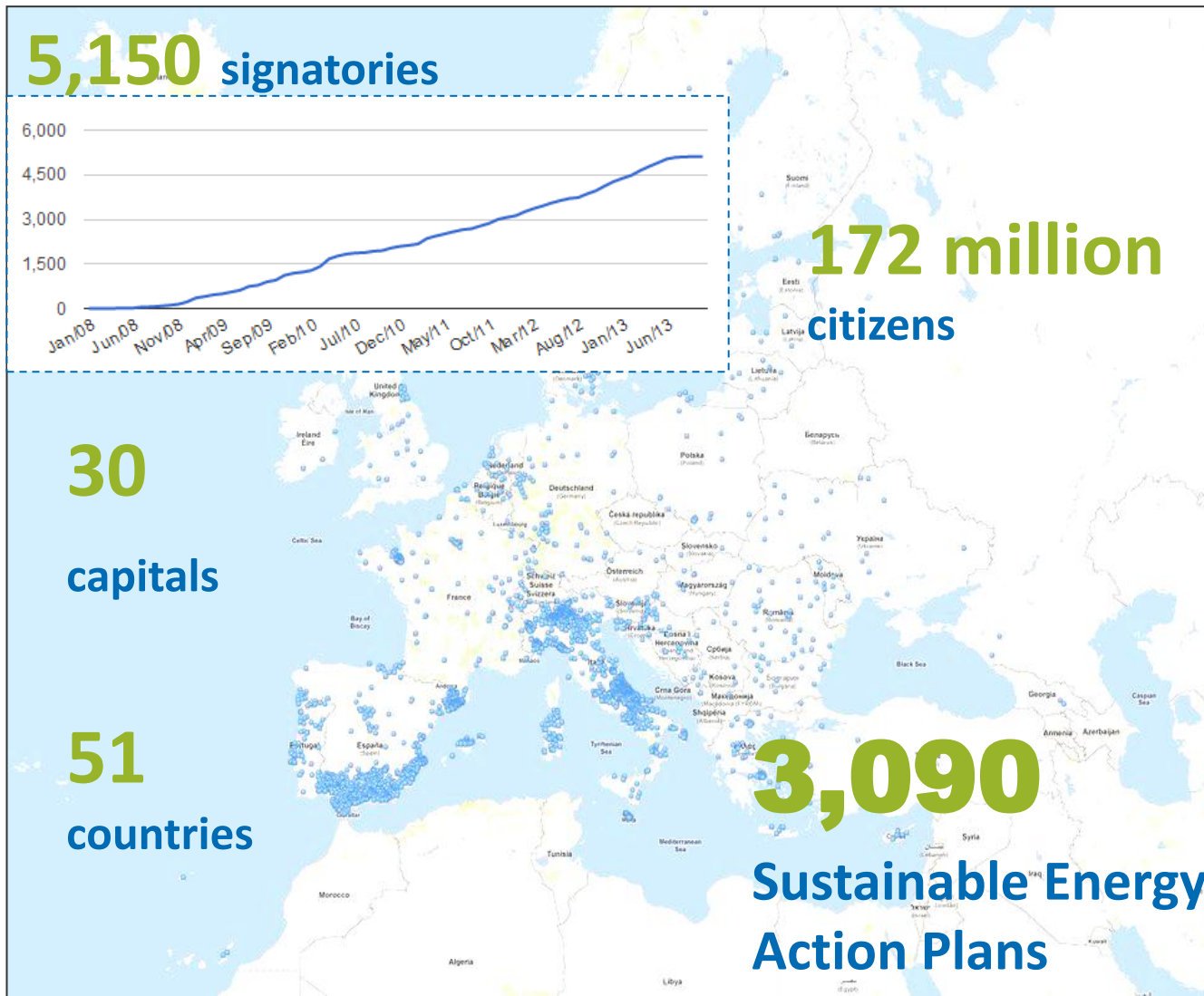
Sustainable energy action plan (SEAP)



Covenant of Mayors



The Covenant today



Objectives

A commitment taken in 2009

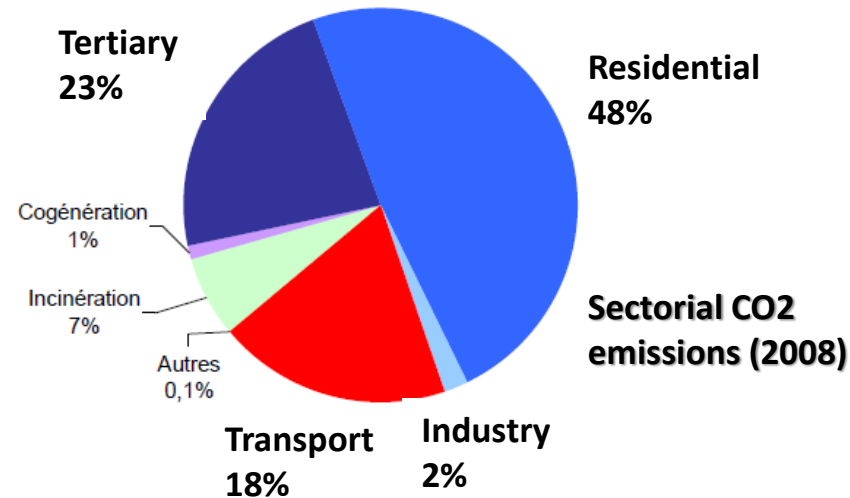
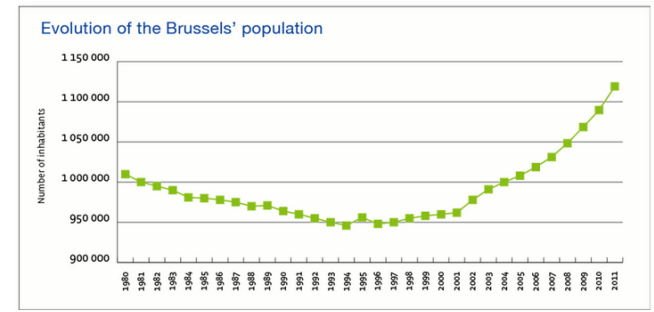
- **Brussels-Capital Region has set itself the objective of reducing its greenhouse gas (GHG) emissions by 30% and by 40%/inhabitant by 2025 compared with 1990.**
- **One of the first to sign the Covenant of Mayors in 2009.**
- **Brussels adopted in 2010 an Action Plan for a Low-Carbon Brussels Region by 2025.**



Brussels-Capital Region

A specific context

- A dense urban Region, made up of 19 municipalities with approximately 1.1 million inhabitants
- Legislative autonomy regarding energy skills - bound by international objectives (climate and energy)
- Old building stock, 75% of energy consumption by buildings
- Capital of Belgium and Europe, should lead by example
- Low renewable energy potential



➔ First target : building

➔ Second target : transport

Low Emission strategy

Step one : stimulate demand

Step one (2004)
Stimulate demand

Demonstrate
Experiment
Facilitate

Step
two
(2006)

Step
three
(2008)

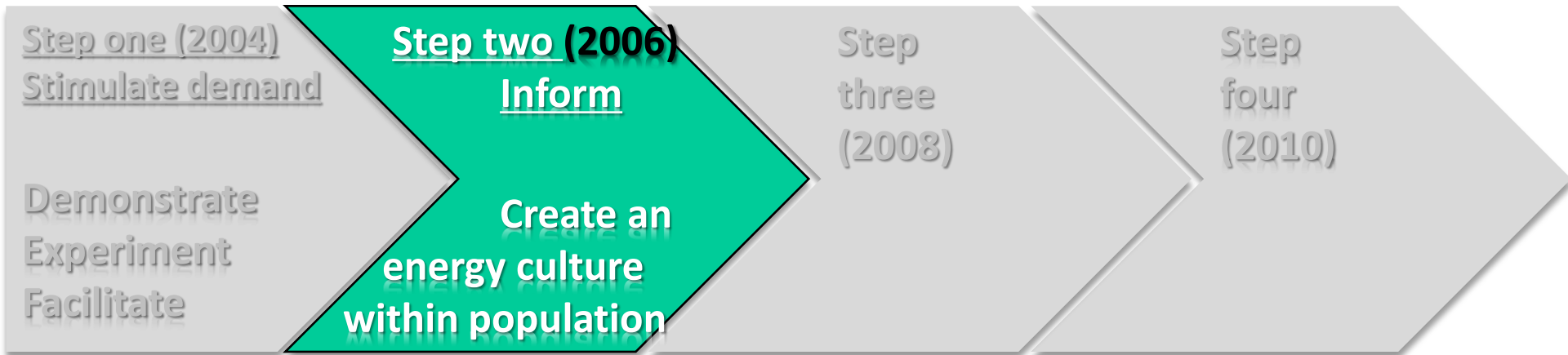
Step
four
(2010)

- **Energy subsidies**
- **Local management action plan (energy management)**
- **Exemplary buildings: Call for proposals + subsidies**
- **Helping and training experts : visits, testimony, dialogue with sectorial federation**
- **Social guidance (low-income households)**



Low Emission strategy

Step two : Inform



- Campaigns
- Raising awareness, changing behaviour

Economisez l'énergie: la planète en profite autant que votre portefeuille.

Vous êtes locataire ou propriétaire ? Vos factures d'énergie sont trop lourdes dans votre budget ? En appliquant quelques gestes simples, vous pouvez diminuer le montant de votre facture de 20%.

Les participants au Défi Énergie des années précédentes l'ont prouvé : ils ont économisés l'énergie jusqu'à 20% !

Comment ? En remplaçant les thermostats à 20°C, en installant des tentures aux fenêtres, en dégivrant le réfrigérateur, etc. De petits gestes faciles qui vous rapportent énergie. De plus, vous faites du bien à la planète : ces économies équivalent à une diminution d'un tonne des émissions de CO2.

Inscrivez-vous dès maintenant au Défi Énergie 2010.

Plus d'infos ? www.de-energie.be • 0800 / 85 301
Chaque geste compte quand on est plus d'un million de Bruxellois.

BRUXELLES ENVIRONNEMENT
Département de l'Énergie et du Climat

**LOUER
RÉPARER
RELOOKER**

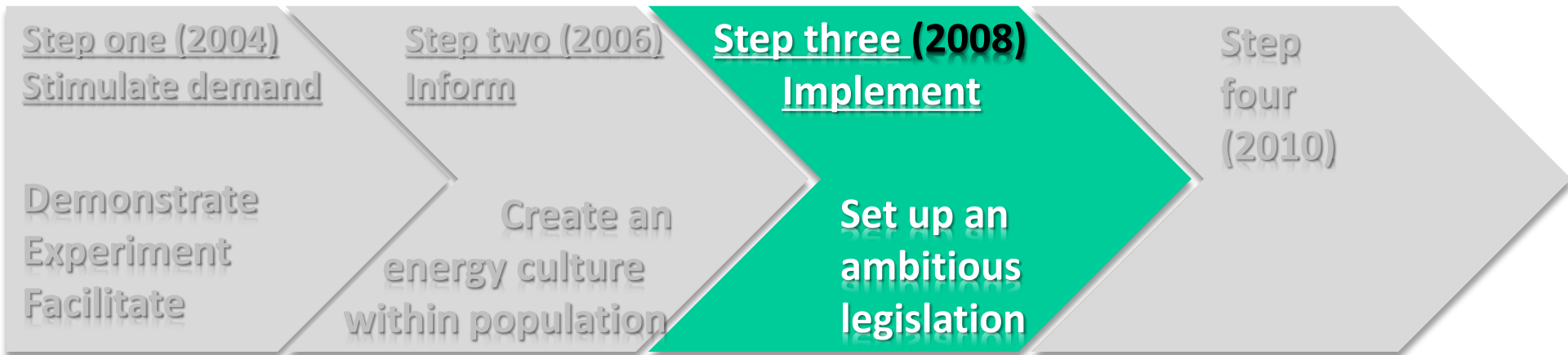
Pour réduire les déchets, multiplions ces gestes.

BRUXELLES ENVIRONNEMENT
Département de l'Énergie et du Climat

INFOS 02 775 75 75 - WWW.BRUXELLES-ENVIRONNEMENT.BE

Low Emission strategy

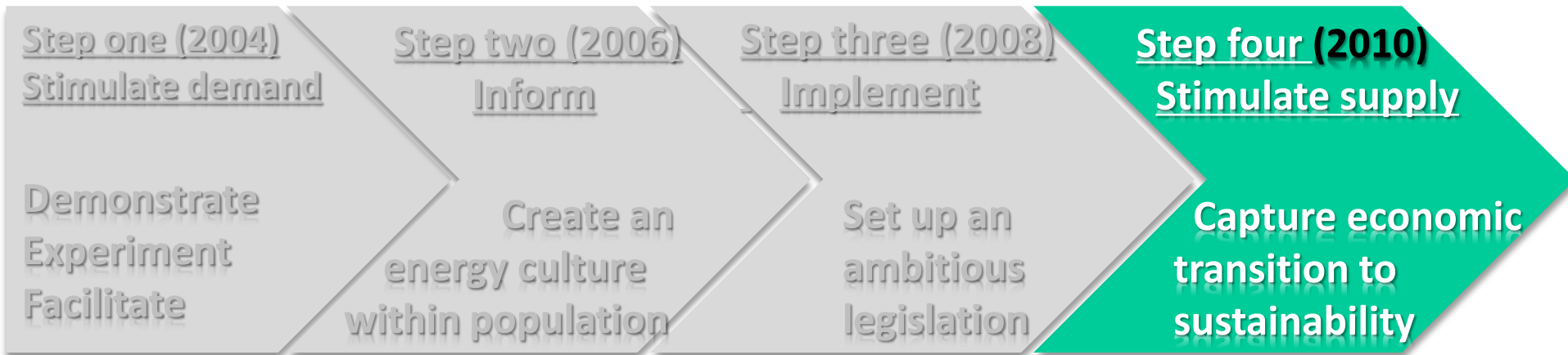
Step three : Implement



- **Mandatory audits for big consumers**
- **Mandatory local management action plan from 100,000m²**
- **Energy performance of buildings legislation (passive house standards 2015)**

Low Emission strategy

Step four : Stimulate supply



➤ **Employment-environment alliance**

- **Multi-sectoral pact between public authorities, social partners, sectoral federations and companies**
- **Develop local business in the construction sector (quality and quantity)**
- **Creates employment, economic growth**

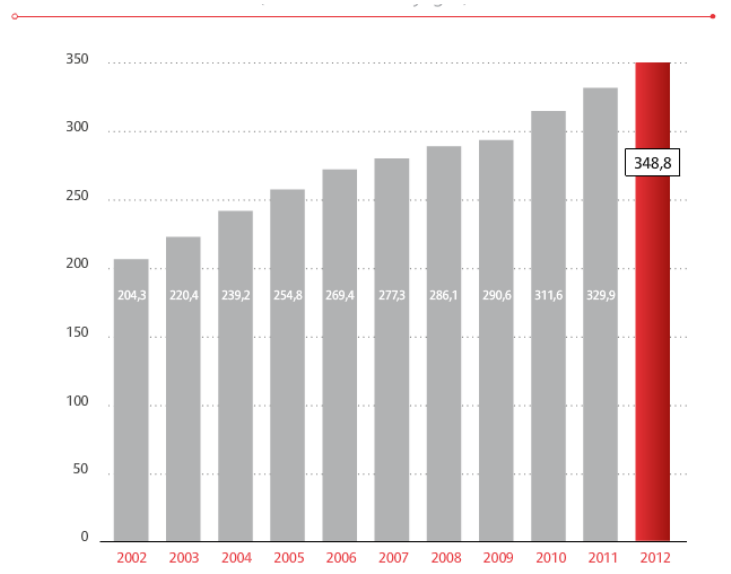
Budget : 4,6 Mio € (2004) → 55 Mio € (2013)

Staff : 8 pers (2004) → 110 pers (2013)

Second target : transport

An ambitious objective

Public transport attendance (in millions of trips)



One objective : reducing the traffic of 20% between 2001 and 2018

One priority : public transport

Results

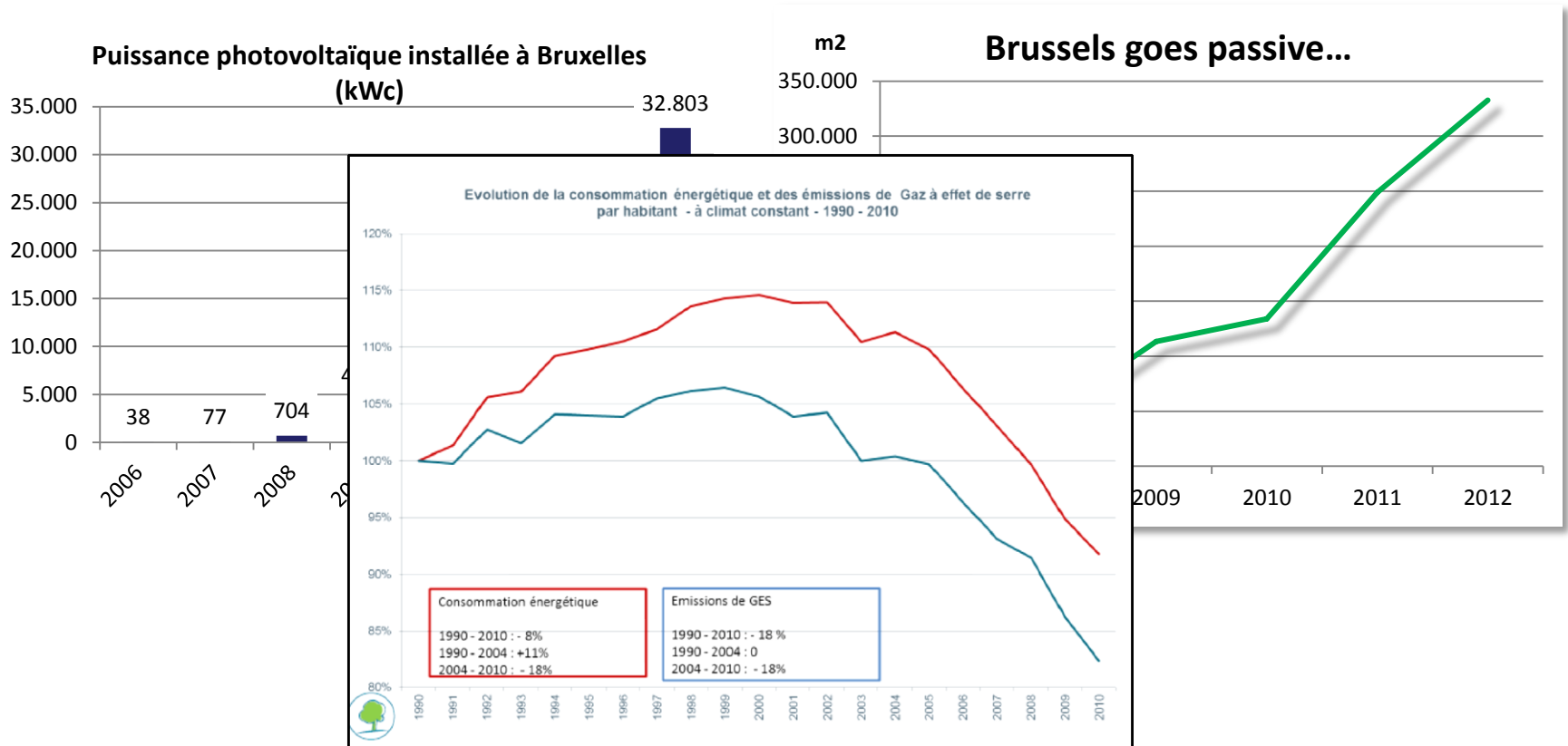
	1999	2010
Car	49.6%	32.0%
Train	0.2%	0.9%
Public transport	14.5%	25.0%
Walk	32.6%	37.0%
Bike	1.2%	3.5%
Oher	1.9%	1.6%

Modal shift between 1999 and 2010



Low Emission strategy

A policy that bears fruits



-25% energy consumption/capita since 2004

International climate policy

Climate finance



ADAPTATION FUND

Brussels contribute to financial support since 2013.

Regional legislation :

- New and additional to ODA
- Multilateral fund
- Adaptation projects



➔ **In 2013, Brussels is the first Region to contribute to the Adaptation Fund (US \$ 1,6 millions)**

From 2014 : use revenues from auctioning of ETS allowances

International climate policy

Community Development Carbon Fund



- Supports small-scale projects that benefit poor communities and their local environment and that generate emission reductions (ERs) under the Clean Development Mechanism
- Brussels = one of the main donors to the Fund (8.5 billions \$)
- Examples of projects : Landfill gas capture in Argentina (Salta), small hydro in Honduras (La Esperanza) and Peru (Santa Rosa),

Thank you
Gracias por su atención

www.sustainablecity.be



Mikaël Angé

mange@huytebroeck.irisnet.be

Tél: +32 (0)2 517 14 13

www.evelyne.huytebroeck.be



**Evelyne Huytebroeck, Brussels Capital Region Minister of
Environment, Energy and urban Renovation**