

**European
co-operation for
Accreditation**

EA peer evaluation

**2nd ETS Compliance Conference
3 & 4 September 2009**

Niels-Christian Dalstrup

EA EX WG on EU ETS, Chair
DANAK, Lead assessor

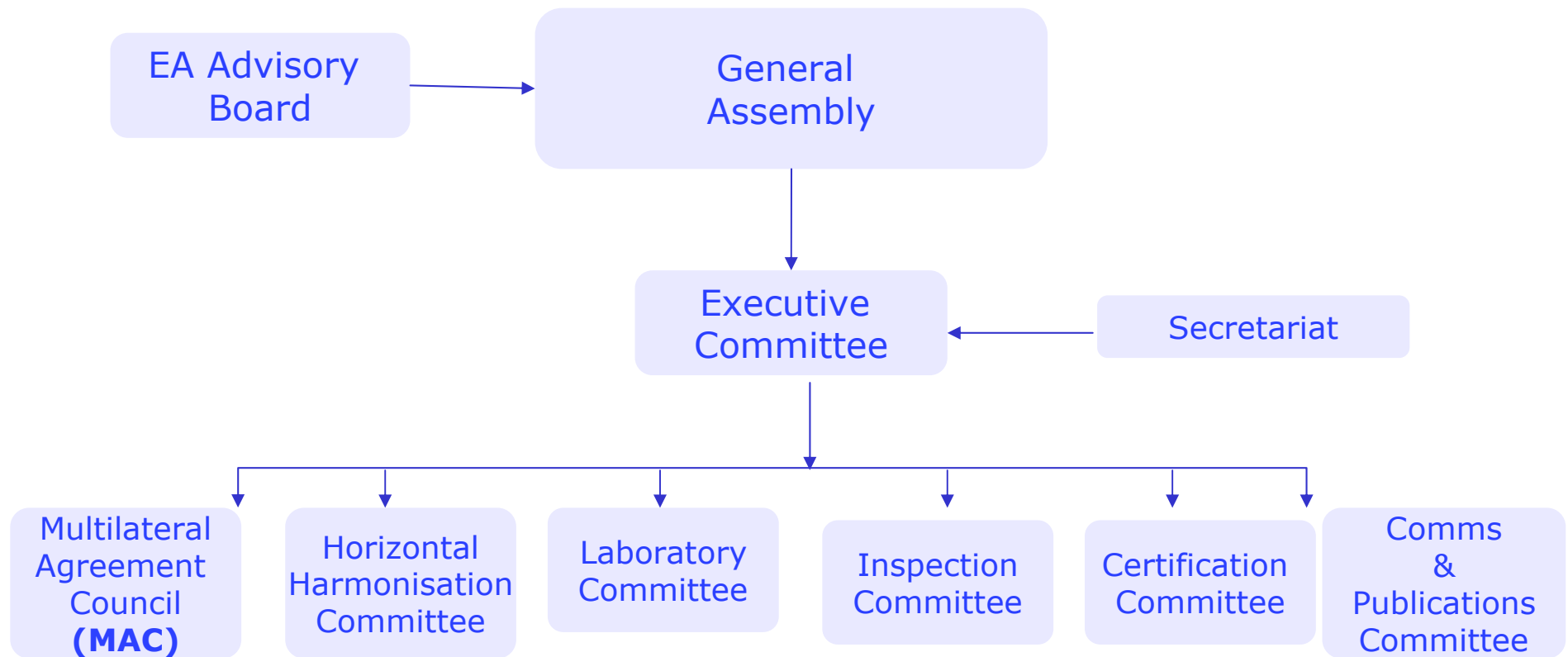
EA - Presentation

- Association of European National Accreditation Bodies of EU/EFTA/candidate countries
- 35 Full Members

Role of EA

- To define, harmonise and build consistency in accreditation as a service in Europe
- To maintain a multilateral agreement on mutual recognition between the accreditation schemes
- To be a technical resource on matters related to the implementation and operation of the European policies on accreditation

EA Organizational structure



Multilateral Agreement (MLA)

The Multilateral Agreement is an agreement between ABs recognising:

- The equivalence of the way the ABs are performing its accreditation activities and
- The competence of the accredited CABs and the equally reliability out the outcome from the CAB's

This is established through peer-evaluations

Multilateral Agreement (MLA)

Structure of the Multilateral Agreement has 5 levels:

- ISO /IEC 17011
- Accreditation activity (or scope)
- Harmonised standards (i.e. ISO/IEC 17020, ISO /IEC 17021, EN 45011)
- Sector specific standards (i.e. ISO/TS 22003, ISO/IEC 27006)
- Standards used by the accredited CAB (i.e. ISO 9001, ISO 14001)

Multilateral Agreement (MLA)

Currently accepted scopes in the MLA:

- Testing Laboratories
- Calibration Laboratories
- Certification Bodies of Management Systems
- Certification Bodies of Products
- Certification Bodies of Persons
- Inspection Bodies

Multilateral Agreement (MLA)

To become a signatory to EA MLA requires:

- AB must be an EA Full Member
- Demonstrated compliance with all the relevant requirements through a successful Peer-evaluation

Peer-evaluation process

- Application to EA Secretariat
- Accept by EA-MAC-MG
- Assignment of Team Leader
- Review of documentation
- Recommendation for Pre-evaluation or Full evaluation

Peer-evaluation process

Pre-evaluation

- Assignment of Team Member
- Office pre-evaluation visit
- Report with findings
- Corrective actions by the AB
- Report and recommendation
- Decision by EA-MAC-MG

Peer-evaluation process

Full evaluation

- Assignment of entire Team
- Documentation to Team and review
- Evaluation visit - office and witness in the field
- List of findings - Non conformity/Concern/Comment
- Draft report to AB for comments
- Corrective actions by the AB
- Final report including the Team's comments and recommendation

Peer-evaluation process

- Evaluation Report to be studied by assigned EA-MAC Task Force Group
- Recommendation to EA-MAC
- Decision by EA-MAC whether
 - additional steps are required
 - or not to sign or to maintain the MLA
 - time for next evaluation

Peer-evaluation process

Re-evaluation

- Full evaluation
- Maximum interval 4 years

Thoughts for the future

- common understanding and consensus on
 - requirements
 - guidelines
 - qualification requirements
- time - window for witness on-site
- adapt current process to specific needs
- dialog