



**Welcome to the Workshop on**

# **Optimal Strategies for Climate Action in Rural Development**

**Brussels, 22 November 2012**

**European Commission, Directorate General Climate Action  
and  
University of Hertfordshire, UK, Agriculture and Environment  
Research Unit**



# **Global climate challenges and one of the EU's responses:**

## **Mainstreaming of climate action in the EU's rural development policy**

**Peter Wehrheim, Head of Unit for Climate Finance and Deforestation  
Directorate General Climate Action**

**Workshop on Optimal Strategies for Climate Action in Rural  
Development, Brussels, 22 November 2012**



*Agriculture and Forestry: Part of the*

# **GLOBAL CLIMATE ISSUE**

# Global climate issues

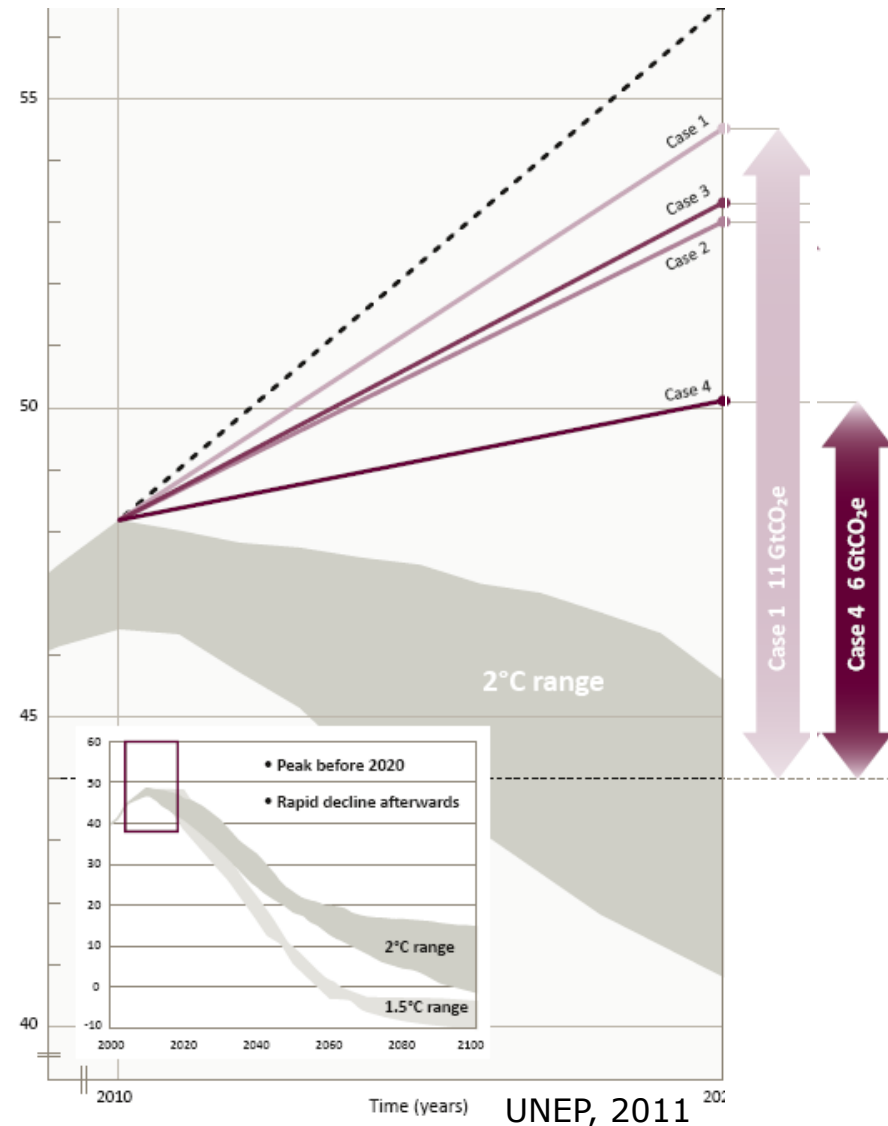


- Limit temperature increase to 2°C
- Durban decisions: note the ambition gap

- 2020 levels consistent with 2°C : **~44 GtCO<sub>2</sub>e**
- Ambition gap: **6-11 GtCO<sub>2</sub>e**

To stay below 2° C:

- For every \$1 of missed investment now, \$4.30 to invest after 2020
- 2011 global investments in renewable energy US\$240bn levels to sustain up to 2020





## **Agriculture and Forests: competing for land & attention**

- The need to ensure food security to feed 9 billion people
- The EU has the objective of eliminating net deforestation
- Efforts to reduce agricultural emissions and increase sink function of agriculture and forestry,
- Increased biomass use for energy as a result of global action on climate change

**Pressure on natural resources increases, continued productivity increases are necessary to feed the world!**

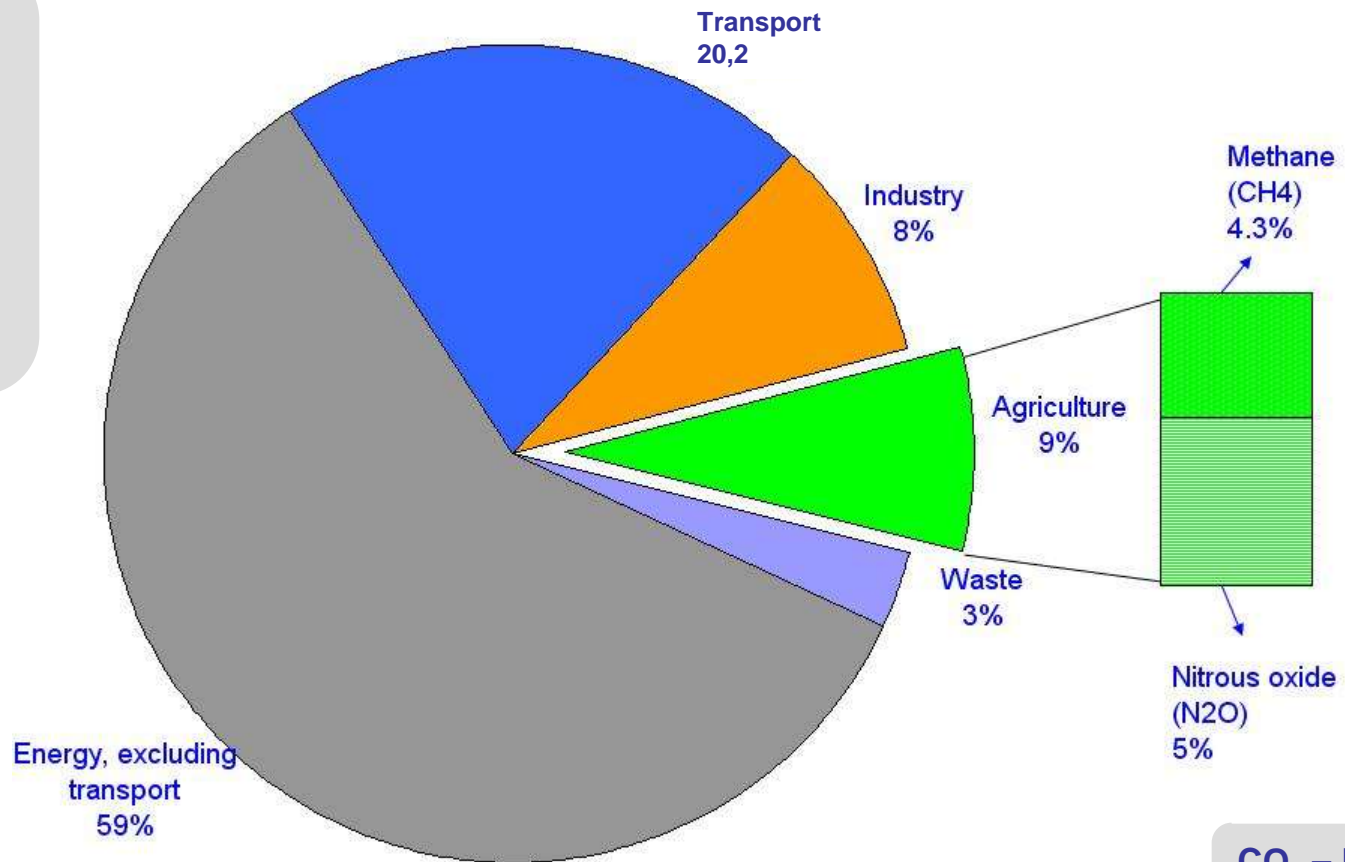


*We need a*

# **CLIMATE FRIENDLY EU AGRICULTURE**

# EU-27 CO<sub>2</sub>-Emissions by sectors (2007)

CO<sub>2</sub> – Emissions from forestry and agricultural land use not included!!!



Source: EEA

+

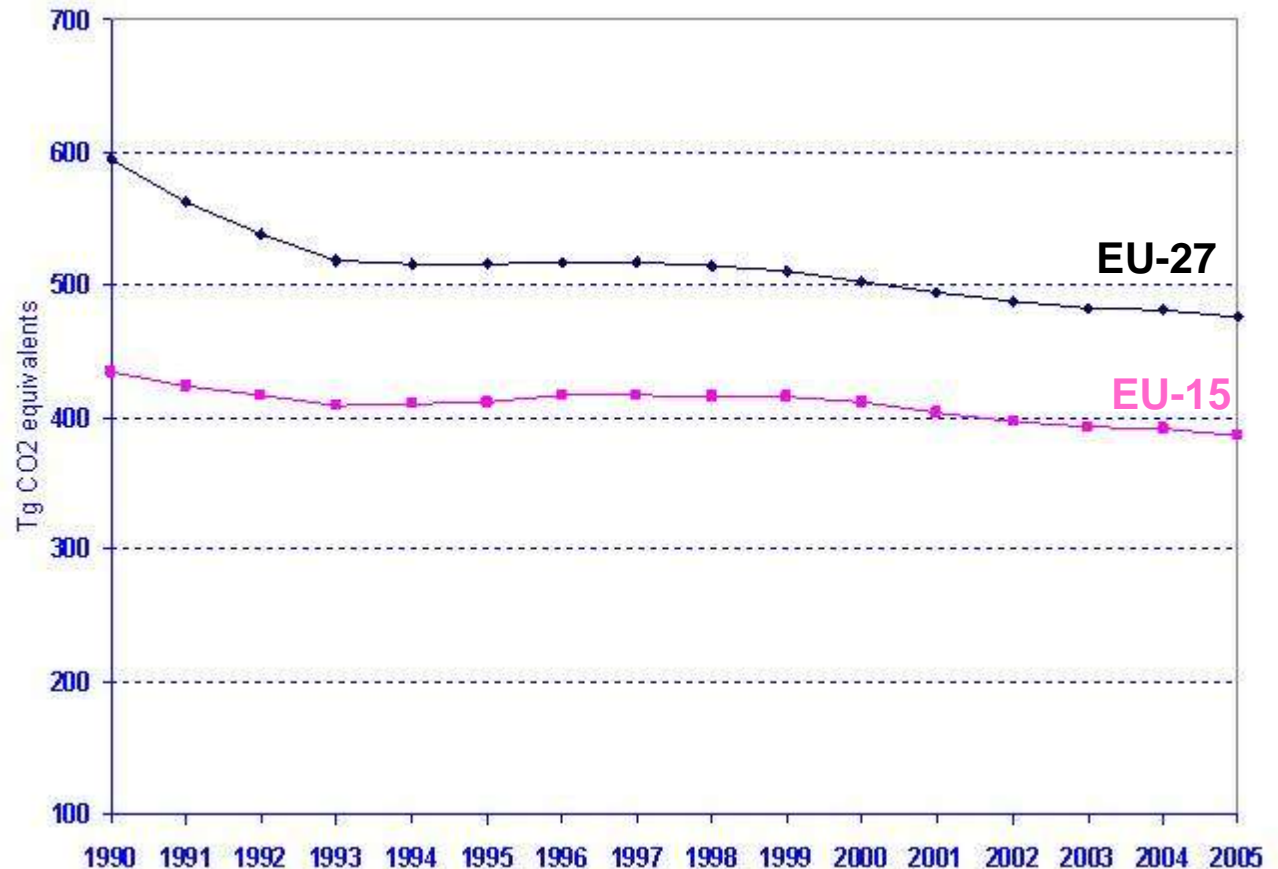
CO<sub>2</sub> – Energy Use (1-2%)

## *EU Emissionen drop since 1990*

- **EU-15: -11%**
- **EU-27: -20%**

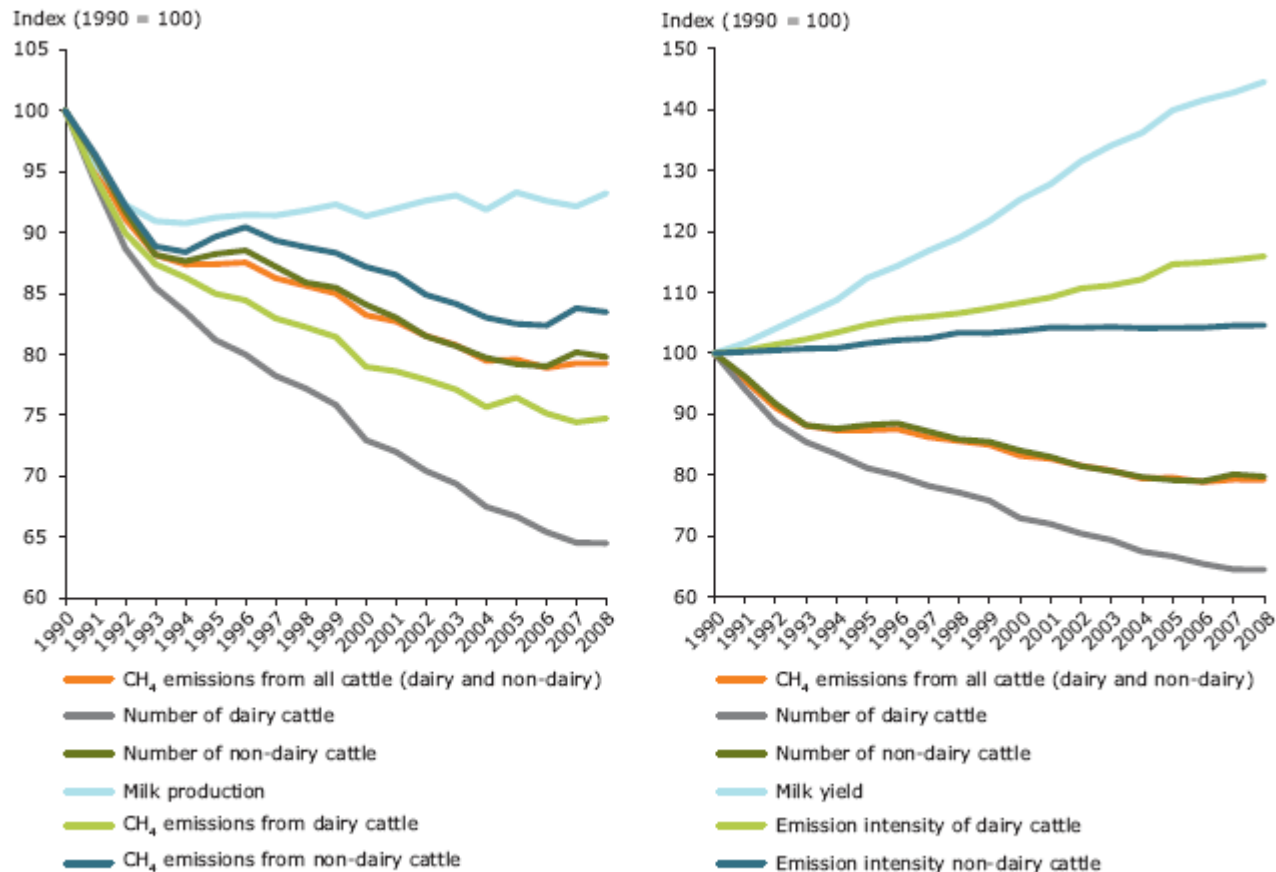
*- Contribution of  
the Common  
Agriculture Policy,  
Nitrate Directive  
and Water  
Protection*

*- Efficient life  
stock and  
fertilizer  
management*





## Example for resource efficiency: CH<sub>4</sub> emissions from enteric fermentation of cattle in the EU, 1990 - 2008



Source: EEA, 2010a.

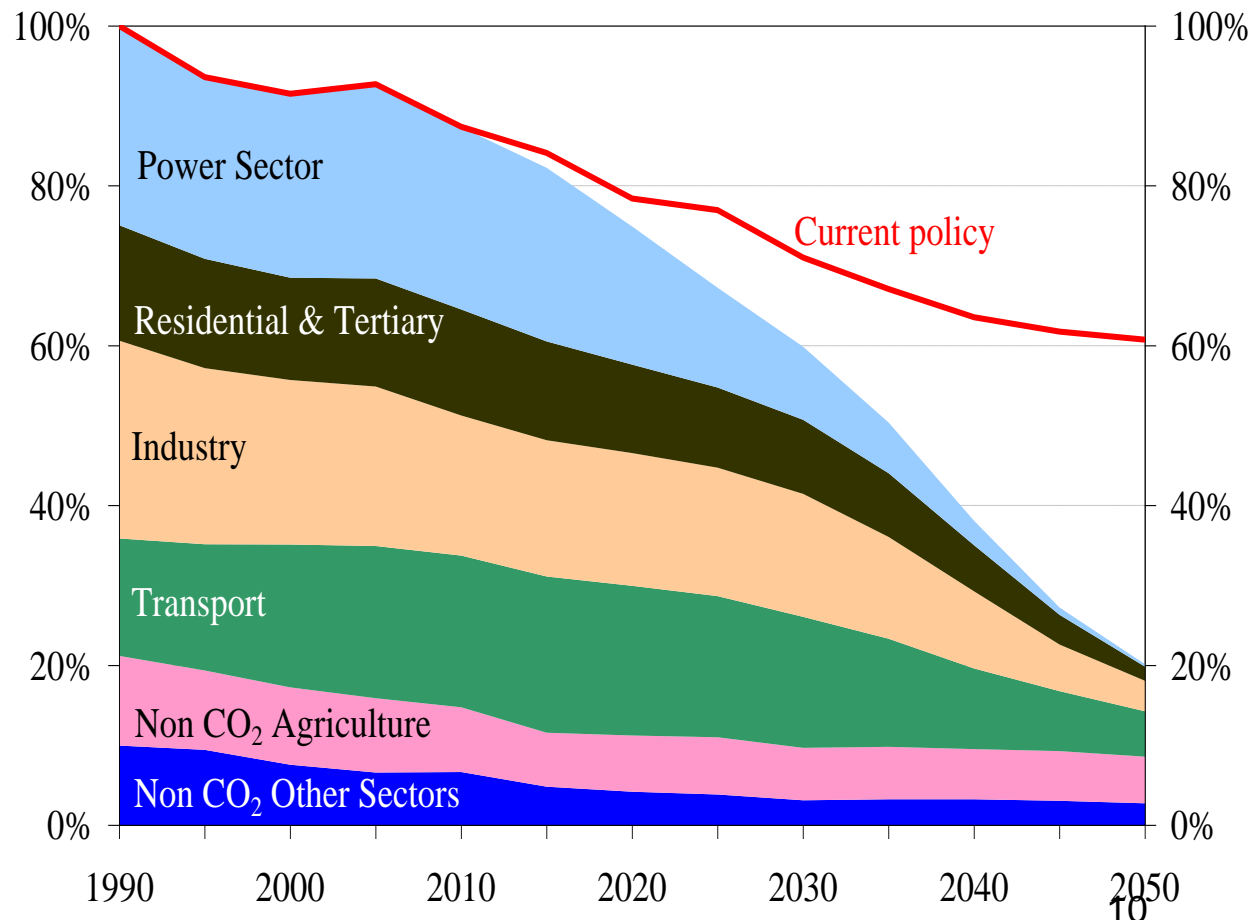
# Looking beyond 2020: The 2050 Low-Carbon Roadmap

## 80% domestic reduction in 2050 is feasible:

- With currently available technologies,
- With behavioural change only induced through prices
- If all economic sectors contribute to a varying degree & pace.

## Efficient pathway and milestones:

- 25% in 2020
- 40% in 2030
- 60% in 2040





*Climate friendly land use needs*

# **ACCOUNTING FOR GHG**

*LULUCF: **L**and **U**se, **L**and **U**se **C**hange and **F**orestry*

# Emission reduction target: key policy instruments

GHG Target in 2020: -20% compared to 1990

-14% compared to 2005

EU Emissions Trading  
System (ETS)  
-21% compared to 2005

Non ETS sectors (transport, buildings,  
waste, **agriculture**)  
-10% compared to 2005

CH<sub>4</sub> and N<sub>2</sub>O  
from agriculture  
included

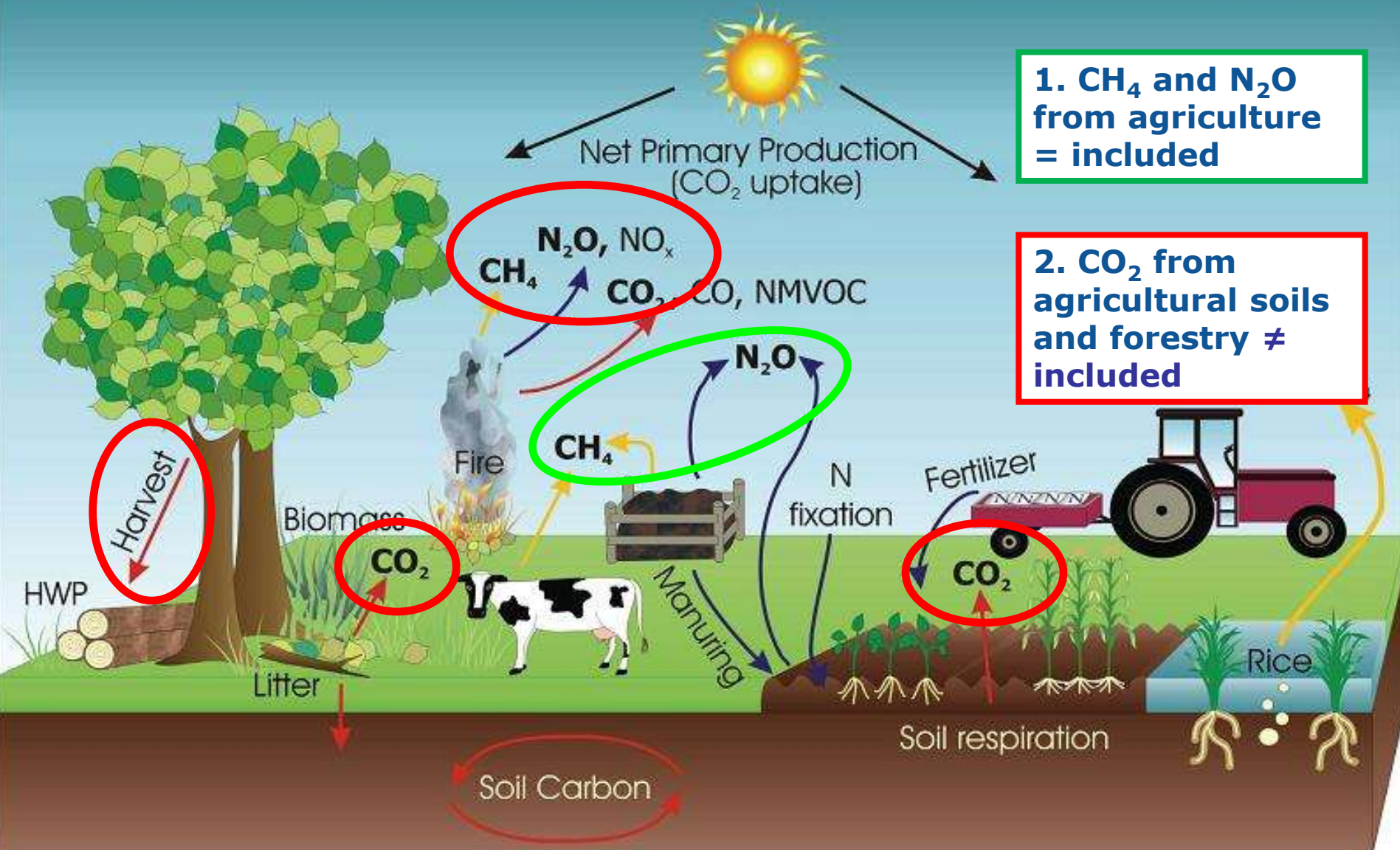
CO<sub>2</sub> from  
LULUCF  
NOT included

27 Member State targets  
stretching from -20% to +20%

# Agriculture and Forestry in EU Climate Policy



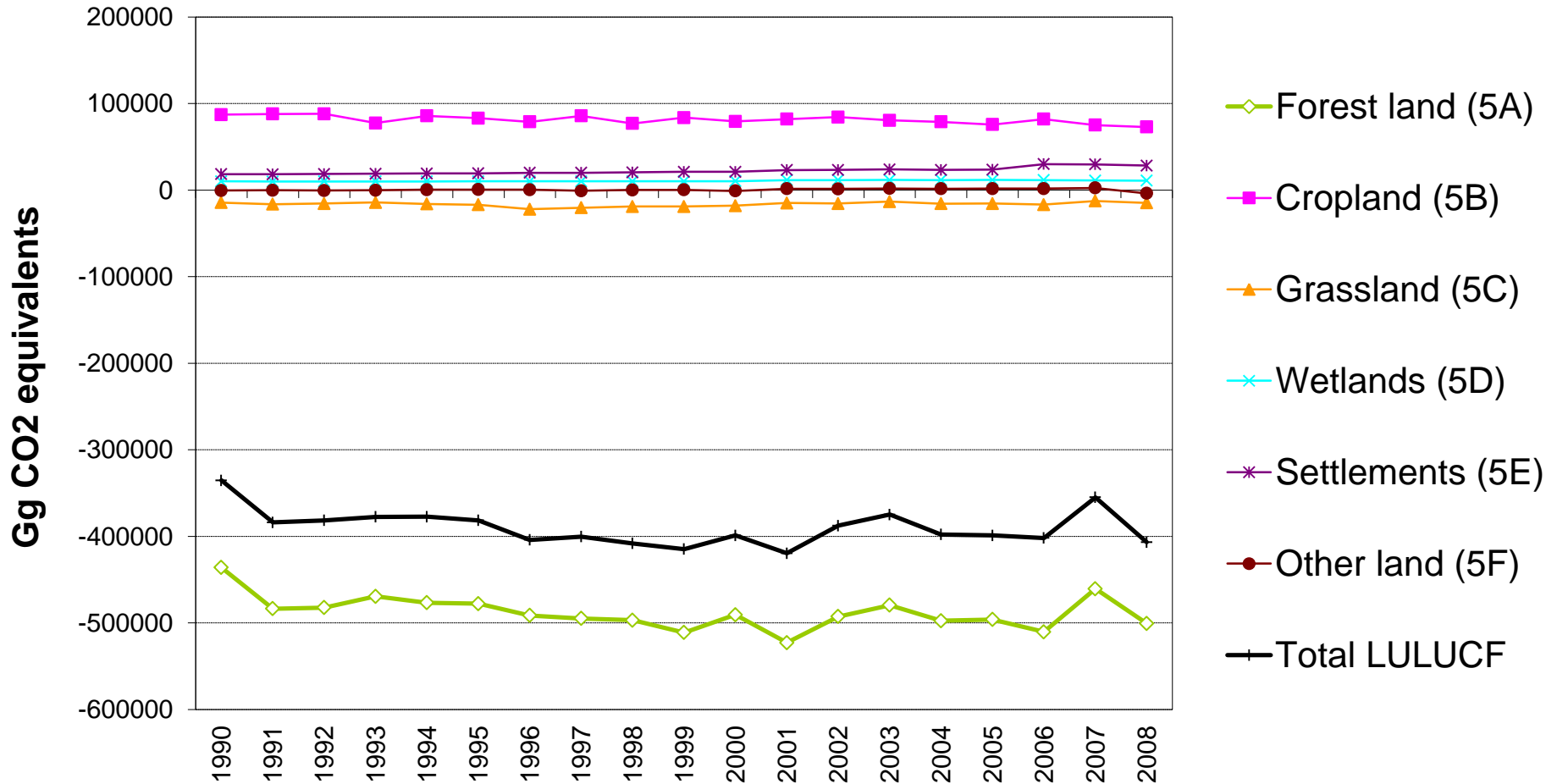
**Agriculture (CH<sub>4</sub> and N<sub>2</sub>O) = included**  
**Forestry and CO<sub>2</sub> from agriculture ≠ in the EU's Green House Gas balance!**



**1. CH<sub>4</sub> and N<sub>2</sub>O from agriculture = included**

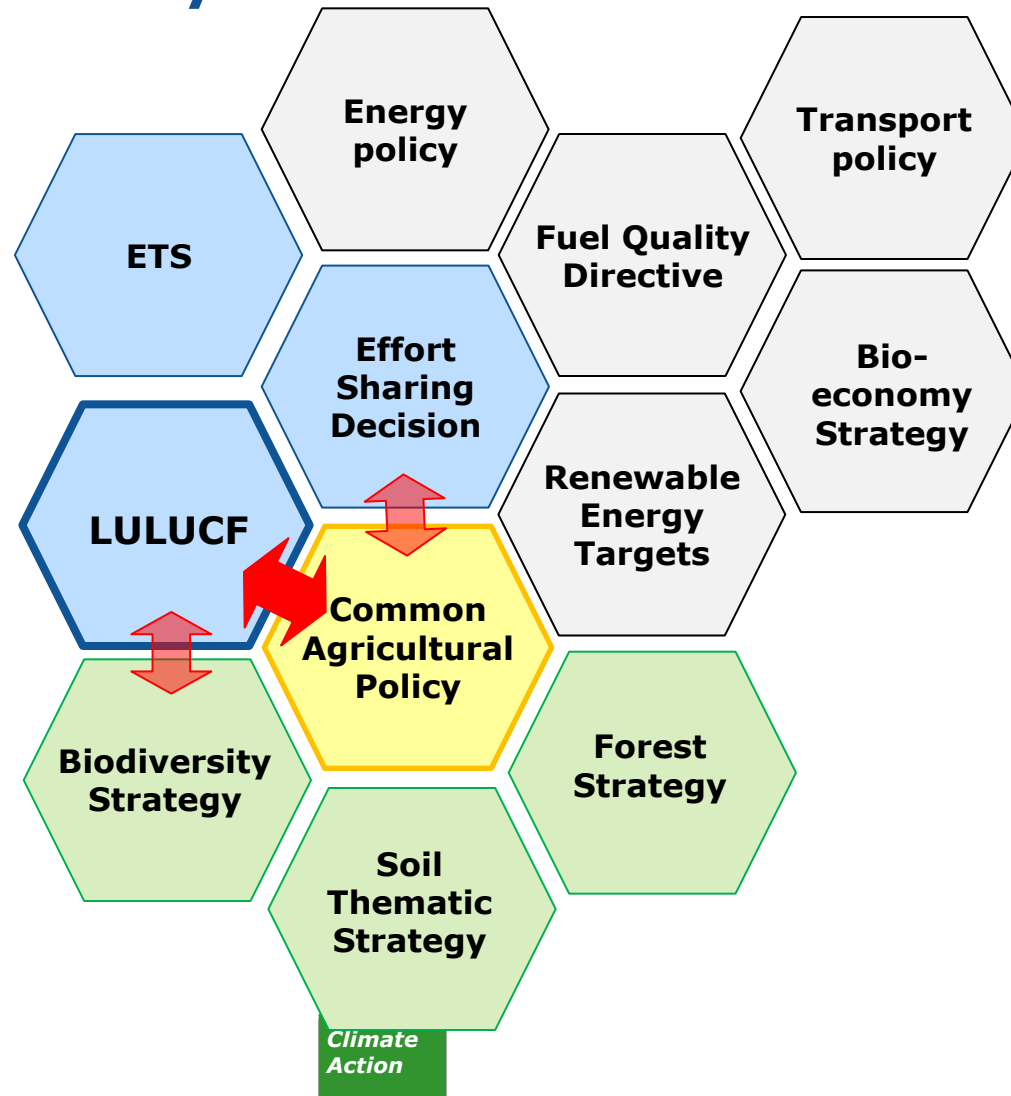
**2. CO<sub>2</sub> from agricultural soils and forestry ≠ included**

# LULUCF





## Links: CAP, ESD, REE roadmap, Biofuels, Soil Thematic strategy, Bio-economy...





*Agriculture, Forestry and Rural Development*

# **CLIMATE MAINSTREAMING**



# Bridging the gap: The next EU budget 2014-2020

- Mainstreaming the climate-related share of the EU budget will be raised significantly to **20% of the whole EU budget** (at least €200bn for climate-related expenditures)
- **Horizon 2020**: around 35% of the Horizon 2020 budget should be climate-related expenditure.
- **Cohesion policy**: more developed and transition regions should allocate at least 20% of their ERDF resources to investment in efficiency and renewables. Less developed regions would allocate at least 6%.
- **Greening of the CAP direct payments, in particular...**
- **...Rural Development!**



## Three way relationship between agriculture, forestry and Climate:

- Emitter – source of GHG
  - Sink – can sequester carbon
  - Adapt – needs to adapt, organic agriculture high potential to support this process
- 
- Climate change requires coordinated mitigation and adaptation efforts
- Mainstreaming of climate action into EU policies:
- EU 20-20-20 climate strategy
  - Framework for Land Use, Land Use Change and Forestry (Commission proposal made in February 2012, currently in co-decision procedure with Council and EP)
  - 20% of EU budget for climate action
  - Greening of the Common Agricultural Policy as a baseline
  - More targeted action in post 2013 Rural Development Programmes

*Thank you for your interest!*

## Further information on:

Commissioner for climate action, Connie Hedegaard:

- [http://ec.europa.eu/commission\\_2010-2014/hedegaard/](http://ec.europa.eu/commission_2010-2014/hedegaard/)

EU Climate Action:

- <http://ec.europa.eu/clima/>

On forests, agriculture and climate:

- <http://ec.europa.eu/clima/policies/forests/>